



Now What? Tire Changing Tips

By Mike Zimmermann

Have the right tools.



Tools You WILL Need

Gloves – important

Kneeling pad or blanket

Bottle Jack – At least 4 Ton

Deep well socket - might need thin-walled to fit around lug nuts

Breaker Bar, (Socket Wrench without ratchet) at least 18' long

4' extension for sockets (anti knuckle-buster)

Long “cheater bar” – 24” steel pipe threaded on both ends, that fits the bottle jack pump. an adaptor to a threaded pipe that fits over the torque wrench handle

Torque Wrench – :Learn how to adjust it. Release tension after use.

So you have a flat, what now?

Single Axel – get as far off the road as possible

Double Axel – drive slowly, flashers on, on 3 tires to a level place, or a nearby town where the tire can be changed.

AFTER LOOSENING LUG NUTS Build a ramp with levelers to lift the flat off the road.



Loosening lug nuts

Do this while there is weight on the tire, before you jack it up, or it will spin.

Or, to stop spin pull brake-away switch / pin.



Breakaway Switch



A long “Cheater Bar” adds leverage when loosening lug nuts.



Where's your jack?

Know where your jack is
BEFORE you need it.

Be sure you have a jack
that's strong enough to lift
your trailer. Bottle Jacks are
available in several weights.
30' Airstream – 4 ton jack.



Where to put the jack?
Duel Axel

**ON THE FRAME, NOT ON
THE AXEL**







Where to put the jack?
Single Axel

ON THE FRAME, NOT ON
THE AXE



Single Axel Jack Placement - ON THE FRAME, NOT ON THE AXEL



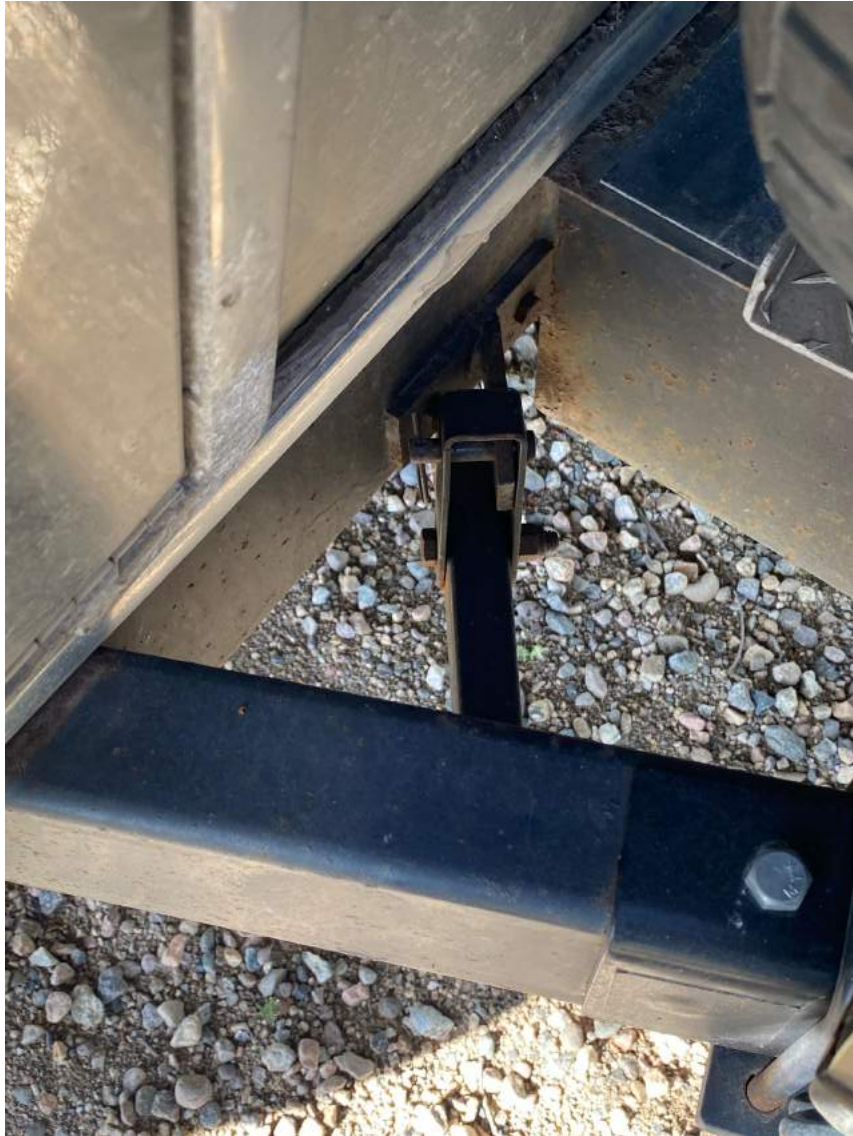
Where **NOT** to put
the jack?



Where is the spare? Under the front of your trailer.



Lowering the spare tire.



How a small person can lift a heavy tire.



TIGHTEN lug
nuts on
opposing sides
of the pattern

12 o'clock,
6 o'clock,
3 o'clock
9 o'clock



Torque your lug nuts to 110 foot pounds with the torque wrench. Re-torque after 50-100 miles.

