

AMERICA'S FAVORITE HITCH



9
X

READERS'
CHOICE
GOLD
AWARD
WINNER
2012 - 2020



THE ORIGINAL
Equal-i-zer®
SWAY CONTROL HITCH

75
YEARS OF
SAFETY



THE BEST PROTECTION FOR YOUR JOURNEY™

The Original Equal-i-zer® Sway Control Hitch has kept families safe on the road, providing peace of mind and a comfortable, stress-free tow for more than 75 years.

No other hitch keeps you safer. Whether you are passing a semi-truck, driving in gusty winds, or through inclement weather, you can be confident your hitch is working to stop sway before it starts.

Superior Performance You Can Trust

The Equal-i-zer hitch is manufactured in the USA from 100% American-made steel. It is the only hitch with Integrated 4-Point Sway Control™ - an advanced system that integrates sway control and weight distribution into one unit. The result is superior sway control performance, excellent weight distribution, exceptional quality, and ease of use.

The Equal-i-zer hitch has received the Trailer Life Magazine Readers' Choice Gold Award nine years in a row by trailer owners across America. The Equal-i-zer hitch has won this award every year since its launch and is the only trailer hitch to be awarded Gold. With thousands of trailer owners voting for Equal-i-zer as the safest hitch on the market, and 75 years of superior performance, you can be confident in your Equal-i-zer hitch.

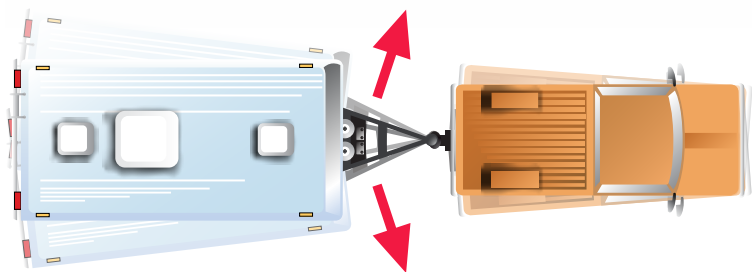
**MADE
IN THE
USA**



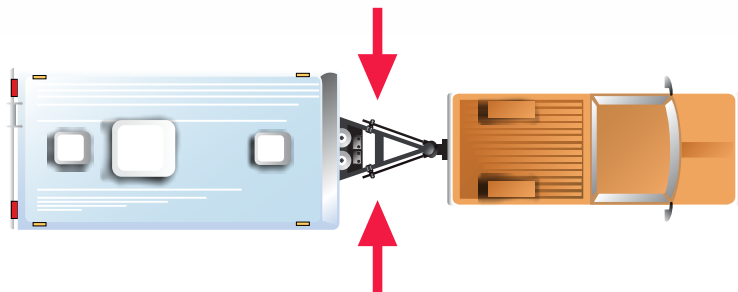
INTEGRATED 4-POINT SWAY CONTROL™

The Equal-i-zer hitch is the only hitch on the market with Integrated 4-Point Sway Control, a revolutionary system that continually works to resist your trailer's attempts to sway. Four unique friction points are built into every Equal-i-zer hitch. Steel-on-steel friction – the same friction a locomotive uses to pull and stop thousands of pounds of rail cars – acts to continually resist your trailer's attempts to sway.

Our engineers have measured up to 300% more resistance to lateral trailer movement with the Equal-i-zer hitch over all other hitch options. This gives you a comfortable and stress-free tow during normal travel, and an added measure of safety when faced with driving hazards and dangerous weather.



Without sway control



With Integrated 4-Point Sway Control

INTEGRATED 4-POINT SWAY CONTROL™



Rotational Friction

Points 1 and 2 Keep the Trailer Safely Behind Your Tow Vehicle

The patented Equal-i-zer hitch head creates two powerful points of rotational friction that work to stop side-to-side sway before it starts. Sway control is constantly engaged by downward pressure from the trailer tongue meeting upward pressure on the hitch's spring arms. The spring arms link the hitch head to the sway control brackets and distribute trailer tongue weight. The tension of the hitch head pinching the two spring arm sockets are the points of friction that effectively hold the trailer in line behind the tow vehicle and combat sway.



Rigid Brackets Instead of Chains

Points 3 and 4 Work to Reduce Side-to-Side Trailer Sway

The Equal-i-zer hitch's unique rigid bracket design provides two additional sway control points. These friction points are activated by loading the spring arms. The Equal-i-zer hitch's rigid brackets work to reduce unwanted side-to-side spring bar movement. The Equal-i-zer hitch's original design, combined with the stability added by the rigid brackets, makes it the best protection for your journey.





WEIGHT DISTRIBUTION

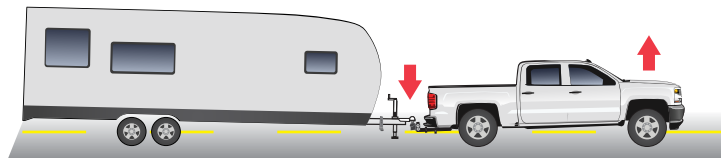
The Equal-i-zer hitch gives you a safer ride by providing exceptional weight distribution which is a critical component in reducing trailer sway.

The Equal-i-zer hitch transfers trailer tongue weight to all the axles of your tow vehicle and helps keep the front of the tow vehicle firmly on the road. Proper weight distribution provides better steering and braking control. This helps reduce stressful driving situations, keeping you safer on the road.

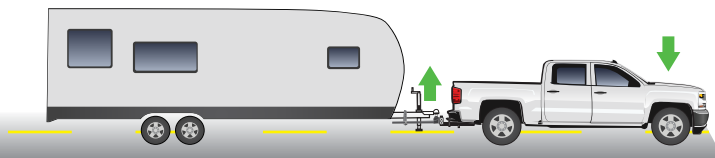
Why Weight Distribution is an Important Part of a Safe Trip

When you couple your trailer to your tow vehicle without weight distribution, the added weight from your trailer causes your tow vehicle to teeter totter over the rear axle. The front of the tow vehicle raises, and the rear sinks. This can cause a dangerous towing situation because less weight on the front axle can create a loss of steering or braking control.

The Equal-i-zer hitch's exceptional weight distribution changes the way the tow vehicle and trailer couple together. It creates a bridge between them, helping them work together like one unit instead of two separate units. The Equal-i-zer hitch distributes the trailer's tongue weight to all the axles of your tow vehicle: improving steering, braking control, and providing a safer, more enjoyable ride.



Trailer coupled without weight distribution.



Trailer coupled with Equal-i-zer hitch's excellent weight distribution.



**MADE
IN THE
USA**



Voted #1 sway control hitch in America 9 years in a row.

QUALITY CONSTRUCTION

The Equal-i-zer hitch has been made in America for 75 years. It is made with the highest quality steel from American steel mills. The most critical components are drop forged, making them stronger and longer lasting. You will not find another hitch on the market that can match the American-made quality of the Equal-i-zer hitch.

Lifetime Warranty

With 75 years of innovation and engineering advancements, the Equal-i-zer hitch provides exceptional towing confidence. From the highest-quality steel, to each of its smallest components, the Equal-i-zer hitch is 100% American made. This process allows us to control every aspect of production, holding each hitch to the highest standards of engineering, quality, and performance. Because of the quality components and workmanship of each Equal-i-zer hitch, we offer a lifetime warranty, providing you peace of mind for years to come.



EASE OF USE

The Equal-i-zer hitch eliminates the need for add-on sway control devices. With the Equal-i-zer hitch, you can make a tight turn at the gas station or back into your camping spot without disconnecting anything from your hitch. With the Equal-i-zer, you can hitch and unhitch at any angle, facilitating a stress-free and easy towing experience.

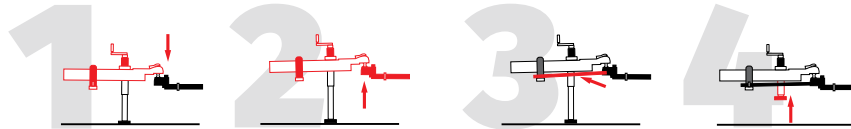
The Equal-i-zer Hitch Can Be Used on All Types of Trailers

The Equal-i-zer hitch can be installed on virtually every tow vehicle and bumper-pull trailer combination – RV, horse and cargo trailers. It is a great solution for boats, and equipment trailers with surge brakes, and can also be easily installed on V-nose trailers.

Easy Hitching and Unhitching

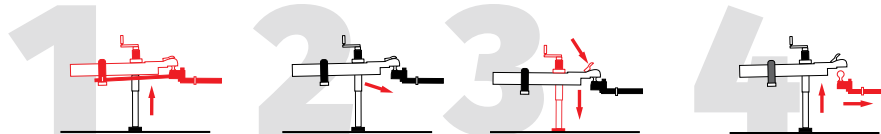
To Hitch:

1. Lower the coupler onto the hitch ball and lock the coupler latch.
2. Use the tongue jack to raise both the trailer and tow vehicle.
3. Swing the spring arms over the rigid brackets and pin them into place.
4. Retract the tongue jack, and you are ready to go.



To Unhitch:

1. Extend the tongue jack to lift the trailer and tow vehicle and take the load off the spring arms.
2. Unpin the spring arms and swing them away from the brackets.
3. Retract the tongue jack until you can open the coupler latch.
4. Raise the trailer tongue, and move the tow vehicle out of the way.



PARTS AND PRICING

STANDARD MODELS with Standard Shank (ball not included)

MFG Part #	Description	MSRP
90-00-0400	400/4,000 lb	\$846.25
90-00-0600	600/6,000 lb	\$867.20
90-00-1000	1000/10,000 lb	\$867.20
90-00-1200	1200/12,000 lb	\$888.14
90-00-1400	1400/14,000 lb	\$950.98
90-00-1600	1600/16,000 lb	\$1,013.82

NO-SHANK MODELS for use with adjustable shanks

MFG Part #	Description	MSRP
90-00-0401	400/4,000 lb	\$741.52
90-00-0601	600/6,000 lb	\$762.46
90-00-1001	1000/10,000 lb	\$762.46
90-00-1201	1200/12,000 lb	\$783.41
90-00-1401	1400/14,000 lb	\$846.25

STANDARD MODEL with ball

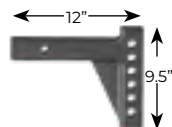
MFG Part #	Description	MSRP
90-00-1069	1,000/10,000 lb	\$919.56



EQUAL-I-ZER HITCH BALLS

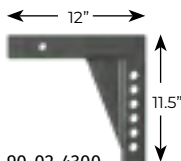
MFG Part #	Description	MSRP
91-00-6080	2" 8,000 lbs	\$27.95
91-00-6100	2-5/16" 10,000 lbs	\$29.95
91-00-6120	2-5/16" 12,000 lbs	\$32.95
91-00-6140	2-5/16" 14,000 lbs	\$37.95
91-00-6160	2-5/16" 16,000 lbs	\$40.95
70-00-4800	1-7/8" Thin walled socket	\$83.00

ADJUSTABLE SHANKS

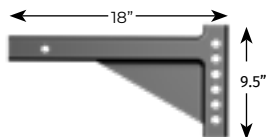


90-02-4100
(3" Drop/7" Rise)

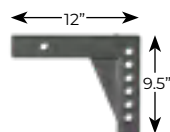
Standard



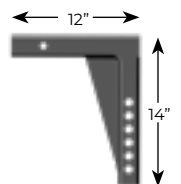
90-02-4300
(6" Drop/10" Rise)



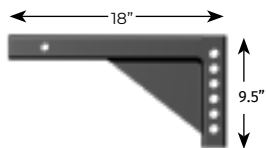
90-02-4500
(3" Drop/7" Rise)



90-02-4200
(4" Drop/8" Rise)



90-02-4400
(9" Drop/13" Rise)



90-02-4600
(4" Drop/8" Rise)

Designed for use with no-shank models of the Original Equal-i-zer Sway Control Hitch. Make sure your hitch head is set at the correct height for your trailer to get maximum performance with one of our adjustable shanks. Fit standard 2" or 2 1/2" receiver tubes and can be used with adapter sleeves. Hitch head mounting holes are spaced at 1 1/4" on center.

Go to equalizerhitch.com/find-your-shank-size to help determine which shank you need.

2" ADJUSTABLE SHANKS

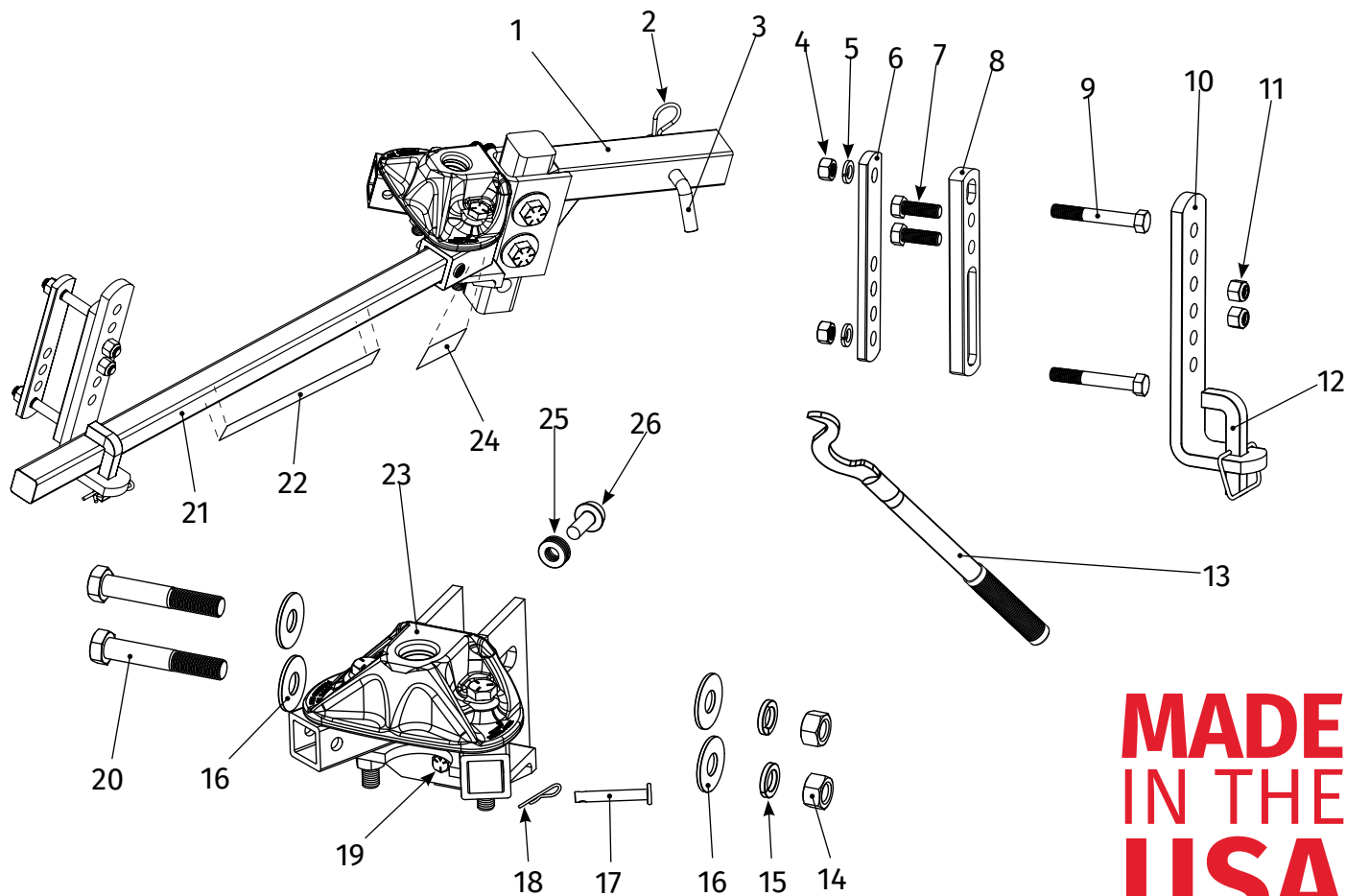
MFG Part #	Description	MSRP
90-02-4100	3" drop/7" rise x 12" length	\$158.14
90-02-4200	4" drop/8" rise x 12" length	\$158.14
90-02-4300	6" drop/10" rise x 12" length	\$183.24
90-02-4400	9" drop/13" rise x 12" length	\$203.69
90-02-4711	12" drop/15" rise x 12" length	\$219.86
90-02-4500	3" drop/7" rise x 18" length	\$203.69
90-02-4600	4" drop/8" rise x 18" length	\$203.69

2" ADJUSTABLE 4K SHANKS only for use with 4K hitch

MFG Part #	Description	MSRP
90-02-4140	4K 3" drop/7" rise x 12" length	\$146.46
90-02-4240	4K 4" drop/8" rise x 12" length	\$146.46
90-02-4340	4K 6" drop/10" rise x 12" length	\$154.63

2 1/2" ADJUSTABLE SHANKS fits 2 1/2" receiver

MFG Part #	Description	MSRP
90-02-4125	3" drop/7" rise x 12" length	\$217.06
90-02-4225	4" drop/8" rise x 12" length	\$217.06
90-02-4325	6" drop/10" rise x 12" length	\$235.75
90-02-4425	9" drop/13" rise x 12" length	\$249.64
90-02-4725	12" drop/15" rise x 12" length	\$267.97



**MADE
IN THE
USA**

6-14K Models

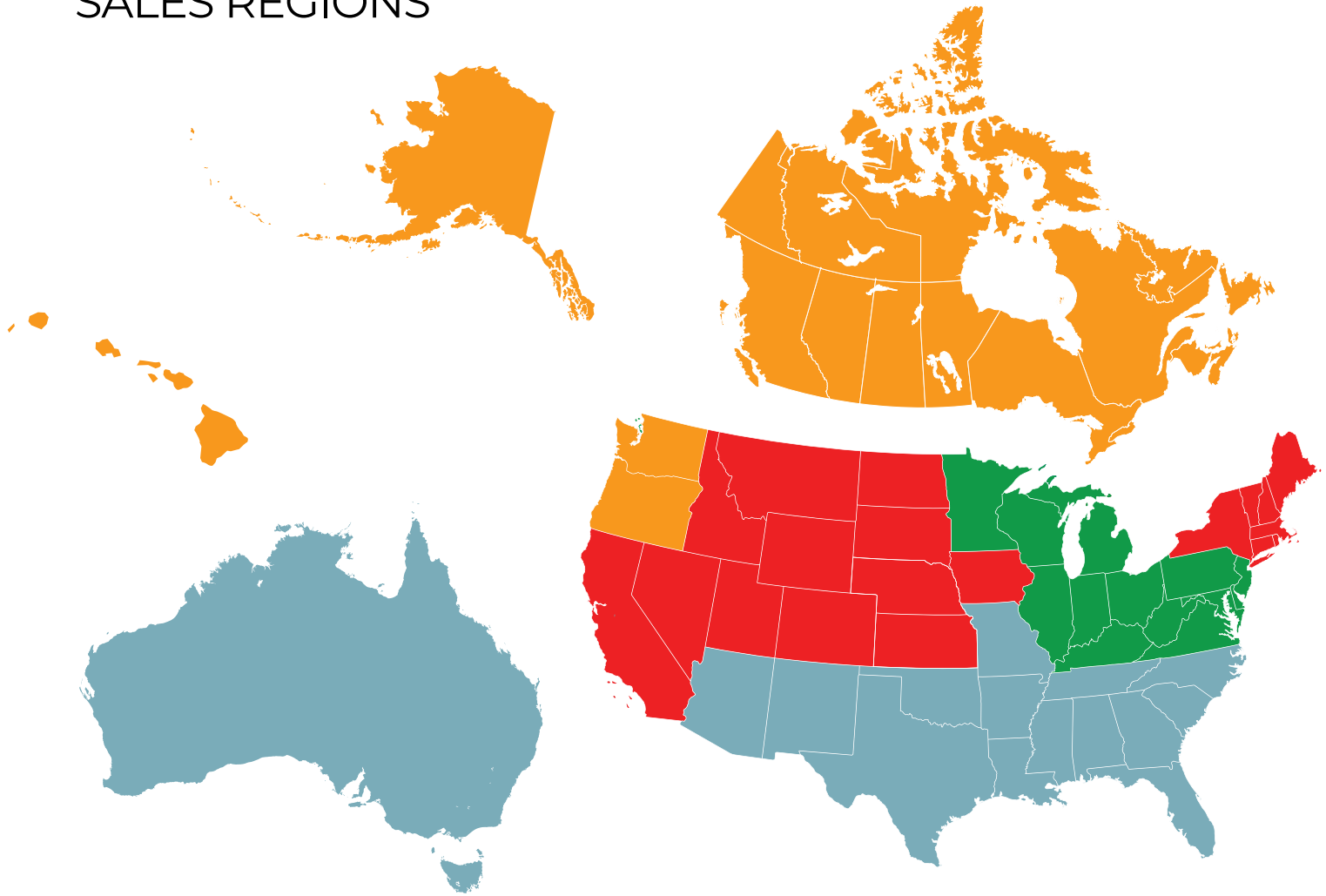
Item #	Part Number*	Part Description	Qty.
1	90-02-4100	Adjustable shank	1
2	90-04-9224	Hitch pin clip	1
3	90-03-9220	Hitch pin	1
4	90-04-9228	1/2" nut (grade 5)	4
5	90-04-9290	1/2" lock washer	4
6	90-02-5200	Inside link plate	2
7	90-04-9281	1/2" x 1-1/2" bolt (grade 5)	4
8	90-02-5370	Outside link plate	2
9	90-04-9270	1/2" x 3-1/2" bolt (grade 5)	4
10	90-02-5150	L-bracket	2
11	90-04-9286	1/2" nylock nut (grade 5)	4
12	90-03-9230	Snap L-pin	2
13	95-01-6000	Snap-up lever (complete)	1
14	90-04-9126	3/4" nut (grade 8)	2
15	90-04-9120	3/4" lock washer	2
16	90-04-9115	3/4" washer	4
17	90-03-9212	Socket pin	2
18	90-04-9216	Socket pin clip	2

6-14K Models

Item #	Part Number*	Part Description	Qty.
19	90-03-9700	Angle set bolt	1
	90-03-9708	(6K - 12K) 7/16" x 1-1/2" (grade 5) (14K) 1/2" x 1-3/4" (grade 8)	
20	90-04-9131	3/4" x 5" bolt (grade 8)	2
21	90-02-0699	6,000 lb spring arm	2
	90-02-1099	10,000 lb spring arm	
	90-02-1299	12,000 lb spring arm	
	90-02-1499	14,000 lb spring arm	
22	BD064	6K arm sticker	2
	BD104	10K arm sticker	
	BD124	12K arm sticker	
	BD144	14K arm sticker	
23	90-02-0600	6K hitch head	1
	90-02-1000	10K hitch head	
	90-02-1200	12K hitch head	
	90-02-1400	14K hitch head	
24	BD035	Socket warning sticker	1
25	90-04-9110	Spacer washer	8
26	90-03-9105	Spacer rivet	1

* Part number displayed is for single (1) individual piece. Each complete hitch contains two spring arms. These arms are specifically sized for a hitch head of the same rating. Spring arms will not fit a hitch head of a different rating.

SALES REGIONS





Kim Dewsnap
RV Sales Account Manager



Rob Stratton
RV Sales Account Manager



Deven McCann
RV Sales Account Manager



Pat Hunt
RV Sales Account Manager



Rich Elliott
Sales and Marketing Director



Jason Binks
Inside Sales Manager



Tyler Ferre
Inside RV Sales

THE ORIGINAL
Equal-i-zer®
SWAY CONTROL HITCH

75
YEARS OF
SAFETY



353 South 1100 West
Provo, Utah 84601
800-478-5578

equalizerhitch.com

eqcat 2110

The Best Protection For Your Journey.™