





# e2<sup>TM</sup> HITCH

## TRUNNION

Available in 4,500 lb, 6,000 lb, 8,000 lb, 10,000 lb, and 12,000 lb weight ratings.

**Brackets are mounted 27"-30" back from the center of the hitch ball.**

**Built-in sway control and weight distribution** make towing faster, easier, and safer for you and your family.

**Permanent sway control** for when you're on downhill grades, towing heavy loads, passing semi-trucks, fighting crosswinds, and making quick maneuvers.

**The perfect hitch** for RVs, boat, cargo, construction, and ATV trailers.

**No chains or add-ons** to remove when backing up, or driving in inclement weather.

**Weight distribution** keeps your truck, trailer and cargo safer, due to improved steering control and stopping power.



Part #	Max tongue wt./Max trailer wt.	MSRP
92-00-0450	450/4,500 lb	\$469.00
92-00-0600	600/6,000 lb	\$499.00
92-00-0800	800/8,000 lb	\$504.00
92-00-1000	1,000/10,000 lb	\$510.00
92-00-1200	1,200/12,000 lb	\$515.00
92-00-1033	1,000/10,000 lb No shank model	\$444.00
92-00-1065	1,000/10,000 lb Hitch ball installed	\$544.00

e2 Hitch





# e2<sup>TM</sup> HITCH

## ROUND BAR

Available in 6,000 lb, 8,000 lb, and 10,000 lb weight ratings.

Brackets are mounted 24"-27" back from the center of the hitch ball.

Built-in sway control and weight distribution make towing faster, easier, and safer for you and your family.

Permanent sway control for when you're on downhill grades, towing heavy loads, passing semi-trucks, fighting crosswinds, and making quick maneuvers.

The perfect hitch for RVs, boat, cargo, construction, and ATV trailers.

No chains or add-ons to remove when backing up, or driving in inclement weather.

Weight distribution keeps your truck, trailer and cargo safer, due to improved steering control and stopping power.



Part #	Max tongue wt./Max trailer wt.	MSRP
94-00-0600	600/6,000 lb	\$397.00
94-00-0800	800/8,000 lb	\$402.00
94-00-1000	1,000/10,000 lb	\$407.00
94-00-1033	1,000/10,000 lb No shank model	\$341.00
94-00-1061	1,000/10,000 lb Hitch ball installed	\$441.00

e2 Hitch

# FLASH™

## BALL MOUNTS

## SECURE Adjustable Locking Ball Mount (ALBM)

**Easy access, front-facing locks.** Key holes are easy to access on the front of the ball mount, so you don't have to reach up behind your bumper to lock, unlock, or make adjustments.

**Fast and easy adjustments.** With adjustable height and dual hitch balls, it is an excellent choice for towing multiple trailers.

**Best anti-theft system available.** Both the locking hitch pin and the adjustment pin are built into the ALBM for ultimate security.

**Tethered dust covers** protect locks by keeping dirt, water, and corrosion out of the lock mechanisms ensuring smooth locking and unlocking.

**Lighter than steel.** With unmatched strength and durability, the Adjustable Locking Ball Mount easily handles the heaviest of loads, at about half the weight of comparable steel ball mounts. This makes carrying, adjusting, and installing your ALBM easy and comfortable.

**Hand-polished mirror finish.** Looks absolutely fantastic on your truck.



**Corrosion resistant,** making it an excellent choice for boating, coastal regions, or harsh winter environments.

**Made in the USA**

### ALBM specifications

- 1,000 lb max tongue weight
- 10,000 lb max trailer weight
- 2" or 2-1/2" receiver
- 2" & 2-5/16" hitch balls available in chrome or stainless steel.

Part #	Description	MSRP
44-00-4400	4" drop / 5" rise	\$229.95
44-00-4600	6" drop / 7" rise	\$229.95
44-00-4800	8" drop / 9" rise	\$239.95
44-00-4900	10" drop / 11" rise	\$239.95
44-00-4606	6" drop / 7" rise 2-1/2" shank	\$259.95
44-00-4806	8" drop / 9" rise 2-1/2" shank	\$269.95
44-00-4906	10" drop / 11" rise 2-1/2" shank	\$269.95

Additional models available online

FLASH



SILENT

Silent Tow Ball Mount (STBM)

**Eliminates hitch rattle.** The exclusive anti-rattle design uses an internal mechanism to lock the shank in the receiver, and the ball holder to the shank, eliminating hitch noise.

**Fast and easy adjustments.** With adjustable height and dual hitch balls, it is an excellent choice for towing multiple trailers.

**Built to handle the harshest environments.** The aircraft-grade aluminum and stainless steel anti-rattle pin resist corrosion, giving you years of excellent performance.

**Lighter than steel.** The aluminum used in every Silent Tow Ball Mount gives you unmatched strength and durability. The STBM easily handles the heaviest of loads, at about half the weight of comparable steel ball mounts. This makes carrying, adjusting, and installing your STBM easy and comfortable.

**Corrosion resistant,** making it an excellent choice for boating, coastal regions, or harsh winter environments.



**Hand-polished mirror finish.** Looks absolutely fantastic on your truck.

**Made in the USA**

- STBM specifications**
- 1,000 lb max tongue weight
  - 10,000 lb max trailer weight
  - 2" or 2-1/2" receiver
  - 2" & 2-5/16" hitch balls available in chrome or stainless steel.

Most popular models

Part #	Description	MSRP
47-00-3400	4" drop / 5" rise	\$204.95
47-00-3600	6" drop / 7" rise	\$204.95
47-00-3800	8" drop / 9" rise	\$214.95
47-00-3900	10" drop / 11" rise	\$214.95
47-00-3606	6" drop / 7" rise 2-1/2" shank	\$234.95
47-00-3806	8" drop / 9" rise 2-1/2" shank	\$244.95
47-00-3906	10" drop / 11" rise 2-1/2" shank	\$244.95

Additional models available online

SCALE

Integrated Scale Ball Mount (ISBM)

**The integrated mechanical scale** ensures repeatable scale accuracy when measuring tongue weight, giving you confidence and peace of mind each time you hook up your trailer.

With a properly balanced load, you can enjoy **improved steering, better braking control, and reduced trailer sway.**

**Easy height and ball adjustments** make it the perfect solution for towing multiple trailers.

**Lighter than steel.** The aluminum used in every Integrated Scale Ball Mount gives you unmatched strength and durability. The ISBM easily handles the heaviest of loads, at about half the weight of comparable steel ball mounts. This makes carrying, adjusting, and installing your ISBM easy and comfortable.

**Built to last,** made with aircraft-grade aluminum for years of safe towing.

**Made in the USA**



- ISBM specifications**
- 1,000 lb max tongue weight
  - 10,000 lb max trailer weight
  - 2" receiver
  - 2" & 2-5/16" chrome hitch balls
  - 2" Dual Lock Pack (part #86-00-3660) specially designed to fit the ISBM is available and sold separately.

Part #	Description	MSRP
48-00-8400	4" drop / 5" rise	\$279.95
48-00-8600	6" drop / 7" rise	\$279.95
48-00-8800	8" drop / 9" rise	\$289.95
48-00-8900	10" drop / 11" rise	\$289.95

SIMPLE

E Series™ Ball Mount

**Fast and easy adjustments.** With adjustable height and dual hitch balls, it is an excellent choice for towing multiple trailers.

**Corrosion resistant,** making it a perfect ball mount for boating, coastal regions, or harsh winter environments.

**Hand-polished mirror finish** and sleek lines complete its simple design and make your truck look fantastic.

**Lighter than steel.** The aluminum used in every E Series gives you unmatched strength and durability. The E Series easily handles the heaviest of loads, at about half the weight of comparable steel ball mounts. This makes carrying, adjusting, and installing your E Series easy and comfortable.

**Made in the USA**



- E Series specifications**
- 1,000 lb max tongue weight
  - 10,000 lb max trailer weight
  - 2" receiver
  - 2" & 2-5/16" chrome hitch balls
  - 2" Dual Lock Pack (part #86-00-3660) specially designed to fit the E Series is available and sold separately.

Part #	Description	MSRP
42-00-2400	4" drop / 5" rise	\$179.95
42-00-2600	6" drop / 7" rise	\$179.95
42-00-2800	8" drop / 9" rise	\$189.95
42-00-2900	10" drop / 11" rise	\$189.95

SIMPLE

E Series™ HD Ball Mount

**Highest tow rating** of any standard 2-1/2" aluminum ball mount in the industry, so it can handle the heaviest trailers with ease.

**Fast and easy adjustments.** With adjustable height and dual hitch balls, it is an excellent choice for towing multiple trailers.

**Corrosion resistant,** making it a perfect ball mount for boating, coastal regions, or harsh winter environments.

**Hand-polished mirror finish** and sleek lines complete its simple design and make your truck look fantastic.

**Lighter than steel.** The aluminum used in every E Series HD gives you unmatched strength and durability. The E Series HD easily handles the heaviest of loads, at about half the weight of comparable steel ball mounts. This makes carrying, adjusting, and installing your E Series HD easy and comfortable.

**Made in the USA**



- E Series HD specifications**
- 1,800 lb max tongue weight
  - 18,000 lb max trailer weight
  - 2-1/2" receiver
  - 2" & 2-5/16" chrome hitch balls
  - 2-1/2" HD Dual Lock Pack (part #86-00-3685) specially designed to fit the E Series HD is available and sold separately.

Part #	Description	MSRP
42-00-2625	6" drop / 6" rise	\$209.95
42-00-2825	8" drop / 8" rise	\$219.95
42-00-2925	10" drop / 10" rise	\$219.95

STRONG

Solid Steel Ball Mount (SSBM)

**Massive 12,000 lb tow rating**, the Solid Steel Ball Mount is built to tow your heaviest trailers with ease.

**Fast and simple adjustments.** With adjustable height and dual hitch balls, it makes towing and adjusting easy for multiple trailers.

**Engineered with a solid shank** from forged steel, making it the strongest steel ball mount on the road so you can tow with total confidence.

**Commercial-grade ball mount** with unmatched towing capacity, durability, and exceptional strength to meets all of your towing needs.

**Powder-coated finish** is made to resist rust in the harshest environments for years of reliable towing.



- SSBM specifications**
- 1,200 lb max tongue weight
  - 12,000 lb max trailer weight
  - 2" receiver
  - 2" & 2-5/16" hitch balls
  - SSBM Dual Lock Pack (part #86-00-4200) specially designed to fit the SSBM is available and sold separately.

Part #	Description	MSRP
49-00-5600	6" drop / 6" rise	\$179.95
49-00-5900	10" drop / 10" rise	\$189.95

STRONG

Solid Steel HD Ball Mount (SSBM HD)

**Massive 20,000 lb tow rating**, the Solid Steel HD Ball Mount is built to tow your heaviest trailers with ease.

**Fast and simple adjustments.** With adjustable height and dual hitch balls, it makes towing and adjusting easy for multiple trailers.

**Engineered with a solid shank** from forged steel, making it the strongest steel ball mount on the road so you can tow with total confidence.

**Commercial-grade ball mount** with unmatched towing capacity, durability, and exceptional strength to meets all of your towing needs.

**Powder-coated finish** is made to resist rust in the harshest environments for years of reliable towing.



- SSBM HD specifications**
- 2,000 lb max tongue weight
  - 20,000 lb max trailer weight
  - 2-1/2" receiver
  - 2" & 2-5/16" hitch balls
  - SSBM HD Dual Lock Pack (part #86-00-4225) specially designed to fit the SSBM HD is available and sold separately.

Part #	Description	MSRP
49-00-5625	6" drop / 5" rise	\$199.95
49-00-5925	10" drop / 9" rise	\$209.95





## FLIP™ Jack Foot

**Extends your trailer jack by six inches,** eliminating 50 cranks both up and down, saving you time and effort.

**Provides more stability** and safety for your trailer with two times the contact surface area than any other jack.

**Eliminates the time and effort** it takes to search for rocks or wood blocks to put under your trailer jack foot.

**Installs in less than 30 seconds,** with no drilling, measuring, or tools needed for most applications.

Fits virtually every RV, horse, cargo, ATV, and flatbed trailer, and works with nearly every 2-1/4" tongue jack, round or square.

Available in both 4" and 6", and easily removes for low clearance situations.



Part #	Description	MSRP
88-00-4500	2-1/4" FLIP 4" Automatic Jack Foot	\$44.99
88-00-6500	2-1/4" FLIP 6" Automatic Jack Foot	\$44.99
88-00-6265	2-1/4" FLIP w/Side Wind Jack	\$92.00

FLIP





## ONESTEP™ Stabilizing Wheel Chock

**Positively locks both wheels in place,** allowing you to freely move around your trailer, with virtually no wheel movement. No other wheel chock delivers more wheel stabilization than the ONESTEP.

**Eliminates the frustration of loose gear falling** and breaking inside your trailer due to unsecured wheel movement.

**Gets rid of unwanted wheel movement** associated with cheap plastic chocks, wood, and rocks.

**Easily slides into place** after the best measurement is determined for your trailer wheels, providing a custom fit and ultimate stability for every trailer.

Adjustable sizing from 16" to 24".

Adjustable sizing from 16" to 30" for XL.



Part #	Description	MSRP
84-00-4000	ONESTEP Wheel Chock	\$49.99
84-00-4150	ONESTEP XL Wheel Chock	\$59.99
84-00-4840	Double Pack ONESTEP Chocks	\$89.99

ONESTEP

# FORTRESS™

## COUPLER LOCK

**Wide shackle** has deep teeth for a strong locking mechanism, fits all trailer couplers, and its shape provides excellent security.

**Locking and unlocking are quick and easy.** The key hole is easy to access on the front of the coupler lock.

**Protects from theft.** Toughest-to-cut, super hardened steel shackle keeps your trailer safe.

**Ultimate security.** Solid (not hollow) detent ball fills trailer coupler.

**Universal compatibility.** Fits virtually all 1-7/8", 2", and 2-5/16" trailer couplers.

**Unbreakable housing.** Solid die-cast housing cannot be cut.

**Tightest fit.** Solid opposing bolt system locks both sides of shackle for tightest fit.

**Protected lock.** Almost impossible to drill or pick and protected by attached dust cover.



- Two barrel-style keys included
- Available for keyed alike situations
- Corrosion resistant

Part #	Description	MSRP
86-00-5015	FORTRESS Coupler Lock	\$51.95

# DUAL LOCK PACKS

**Securely locks your hitch ball holder** to the drop bar, and your drop bar to the receiver. This gives you peace of mind knowing your trailer is safe on the back of your tow vehicle.

**Barrel style lock,** makes it nearly impossible to pick or drill, keeping your ball mount safe from thieves.

**Water and debris are kept out of the lock chamber** with the lock's rubber O-ring, making it smooth and easy to lock and unlock.

Specially designed to fit the ISBM, E Series, E Series HD, SSBM, and SSBM HD.

Simple 1/4 turn provides quick locking and unlocking.



Part #	Description	MSRP
86-00-3660	2" Dual Lock Pack	\$39.95
86-00-3685	2-1/2" HD Dual Lock Pack	\$44.95
86-00-4200	SSBM Dual Lock Pack	\$39.95
86-00-4225	SSBM HD Dual Lock Pack	\$44.95

# RECEIVER LOCK

**Securely locks your ball mount into your receiver,** so you can have peace of mind knowing your ball mount and trailer are secure on the back of your tow vehicle.



Part #	Description	MSRP
86-00-3050	5/8" Locking Hitch Pin - For 2" Receivers	\$13.95
86-00-3160	5/8" Locking Hitch Pin - For 2-1/2" Receivers	\$15.95



## ZIP™ BREAKAWAY CABLE

**Coated cable wire eliminates fray** and protects your fingers from loose, sharp wire.

**The coiled cable stays safely off the ground** while you're towing, preventing wear and tear to the cable, and providing years of lasting use.

**Provides a safer and more effective connection** to your trailer, because it doesn't rust, fray, or become damaged while towing. This keeps you and your trailer safer when towing.



Part #	Description	MSRP
80-00-2040	4' Cable and Switch	\$20.99
80-00-2060	6' Cable and Switch	\$22.99
80-01-2204	4' Cable and Pin	\$12.49
80-01-2206	6' Cable and Pin	\$14.49
80-01-2140	4' Universal Cable	\$12.49
80-01-2160	6' Universal Cable	\$14.49

## CHAIN UP™

**The most secure way** to keep your safety chains off the ground and working properly.

**Increases the longevity** of your safety chains by keeping them from dragging against the road.

**Eliminates the need** to twist your chains to keep them off the ground.



Part #	Description	MSRP
82-00-3065	CHAIN UP for ball mount	\$8.95
82-00-3090	CHAIN UP for weight distribution & multi ball	\$9.95

## BALL COVER

**Saves time cleaning off road grime** and re-greasing the hitch ball.

**Keeps the lube on your hitch ball** and off your clothes.

**Never search for your ball cover again**, the handy tether keeps it right with the hitch ball, even while towing.

**Gets you on the road faster**, by taking away the hassle and mess of keeping your hitch ball properly lubricated.



Part #	Description	MSRP
82-00-3220	2" BALL COVER with tether	\$5.95
82-00-3216	2-5/16" BALL COVER with tether	\$5.95

# SHIN GUARD™

**Protects your shins** by providing a cushion between your shin and the hard edges of the ball mount.

**Installation takes less than 5 minutes**, simply slide it over the top of the hitch ball and stretch the bottom down around the nut.

**Fits both 2" and 2-5/16" hitch balls**, and on ball mounts up to 2-1/2" wide.

## 7-PIN PLUG COVER

**Keeps dirt and debris out of your wiring harness**, eliminating the need to clean out your 7-pin every time you tow, getting you on the road faster.

**Eliminates expensive maintenance costs** that come with having to replace a 7-pin trailer plug by keeping corrosion, water, ice, and dirt out of your 7-pin wiring harness.

**Attached tether** keeps the plug cover connected to your 7-pin.

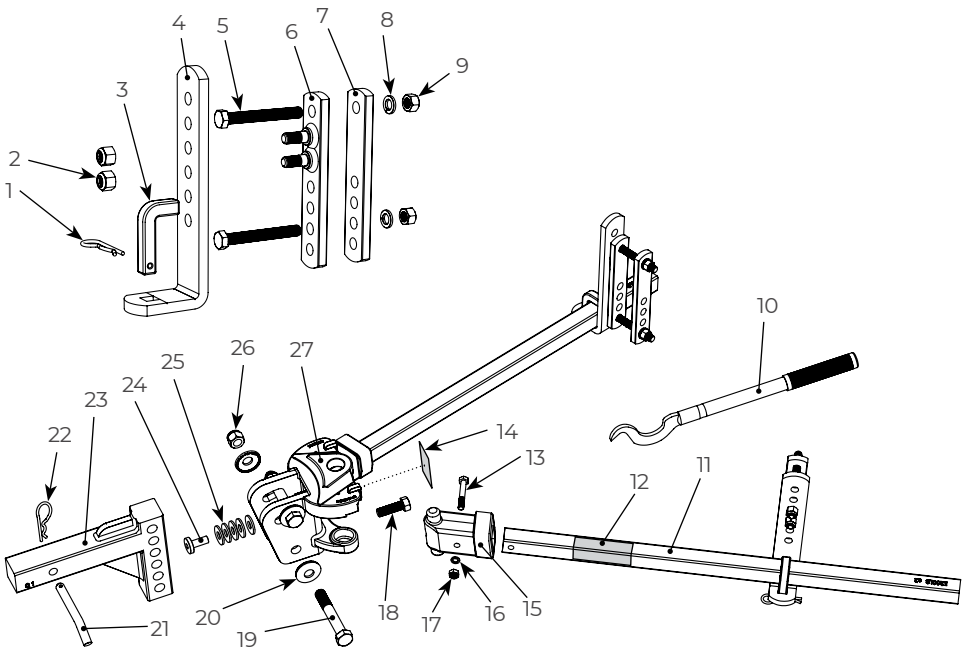


Part #	Description	MSRP
82-00-3125	Black SHIN GUARD with tether	\$8.95
82-00-3126	Orange SHIN GUARD with tether	\$8.95
82-00-3127	Yellow SHIN GUARD with tether	\$8.95

Part #	Description	MSRP
82-00-3315	7-PIN PLUG COVER	\$5.95

# PARTS BREAKDOWN

6k - 12k Trunnion Hitch



### Available Shanks

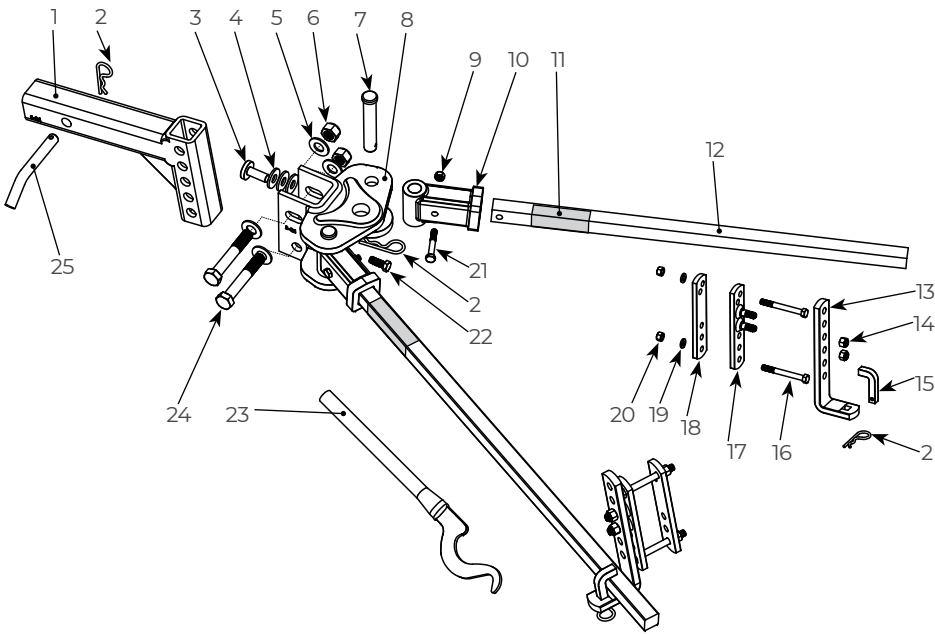
Part #	Description	MSRP
92-02-4213	2" drop / 8" rise / 12" length	\$114.00
92-02-4214	4" drop / 9.5" rise / 12" length	\$116.00
92-02-4315	6.5" drop / 12.5" rise / 12" length	\$118.00

Item #	Part Number	Part Description	Qty.
1	92-04-9208	L-pin clip	2
2	93-04-9285	1/2" nylock nut	4
3	92-03-9205	L-pin	2
4	93-02-5150	L-bracket	2
5	93-02-9270	1/2" x 4" bolt (grade 5)	4
6	93-02-5350	Studded outside link plate	2
7	93-02-5200	Inside link plate	2
8	92-04-9290	1/2" lock washer	4
9	92-04-9228	1/2" nut	4
10	92-00-6000	Snap-up lever	1
11	92-02-0699	6,000 lb spring bar (single)	2
	92-02-0899	8,000 lb spring bar (single)	
	92-02-1099	10,000 lb spring bar (single)	
	92-02-1299	12,000 lb spring bar (single)	
12	BD094-WS	Bar sticker	2
13	92-04-9615	10mm hex bolt	2
14	BD092-WH	Trunnion head attn. sticker	1
15	92-02-0644	6K trunnion knuckle	2
	92-02-0844	8K trunnion knuckle	
	92-02-1044	10K trunnion knuckle	
	92-02-1244	12K trunnion knuckle	
16	92-04-9620	10mm lock washer	2
17	92-04-9216	10mm nylock nut	2
18	92-03-9700	5/8" angle set bolt	1
19	92-04-9635	3/4-10 x 5" bolt (grade 5)	2
20	92-04-9645	3/4" conical toothed washer	4
21	92-04-9625	Hitch pin	1
22	92-04-9630	Hitch pin clip	1
23	92-02-4100	1" drop x 7" rise adj. shank	1
24	92-04-9650	Spacer rivet	1
25	92-04-9655	Spacer washers	7
26	92-04-9640	3/4" nylock nut	2
27	92-02-1255	e2 trunnion hitch head	1



PARTS BREAKDOWN

4.5k Trunnion Hitch



4.5k Trunnion Hitch

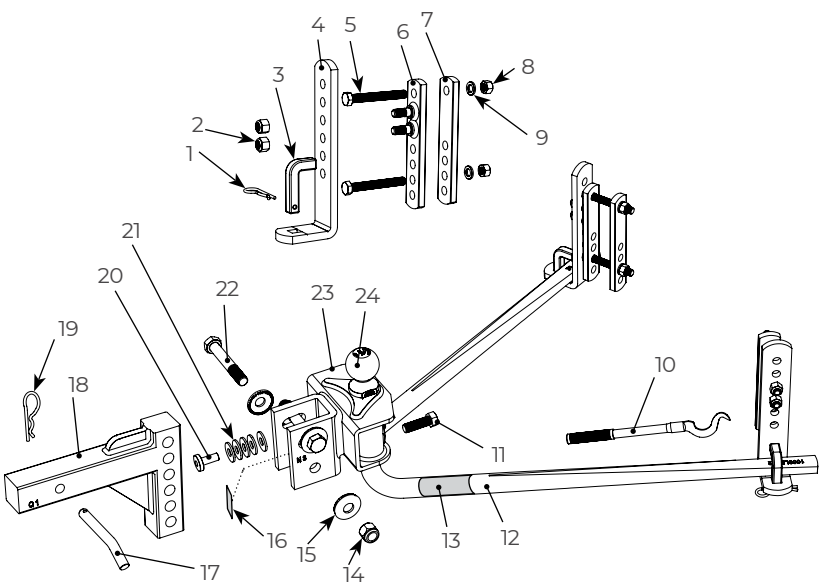
Item #	Part Number	Part Description	Qty.
1	92-02-4116	Adjustable shank	1
2	92-04-9705	Cotter pin / R-clip	5
3	92-04-9650	Spacer rivet	1
4	92-04-9655	1/2" spacer washer	3
5	92-04-9726	5/8" flat washer	4
6	92-04-9736	M16-2 nylock nut (class 8) zinc	2
7	92-04-9743	3/4" X 4" clevis pin	2
8	92-02-0426	Hitch head	1
9	92-04-9766	M8-1.25 nylock nut (class 8) zinc	2
10	92-02-0456	4.5K trunnion knuckle	2
11		Spring bar sticker	2
12	92-02-0496	4,500 lb spring bar (single)	2
13	92-02-5140	L-bracket	2
14	92-03-9486	7/16"-14 nylock nut (grade 5)	4
15	92-03-9460	L-pin	2
16	92-03-9470	3/8"-16 X 3-1/2" hex bolt (grade 5)	4
17	92-02-5354	Outside link plate	2
18	92-02-5240	Inside link plate	2
19	92-03-9490	3/8" split washer	4
20	92-03-9475	3/8"-16 nut (grade 5)	4
21	92-04-9756	M8-1.25 x 55 HCS (class 8.8) zinc	2
22	92-03-9746	3/8"-24 X 1" HCS (grade 5) zinc	1
23	92-02-6040	Snap-up lever	1
24	92-04-9786	M16-2 X 100 HCS (class 8.8) zinc	2
25	92-04-9625	Hitch pin	1

Available Shanks

Part #	Description	MSRP
90-02-4240	4" drop / 8" rise / 12" length	\$125.50
90-02-4340	6" drop / 10" rise / 12" length	\$132.50

PARTS BREAKDOWN

6k-10k Round Bar Hitch



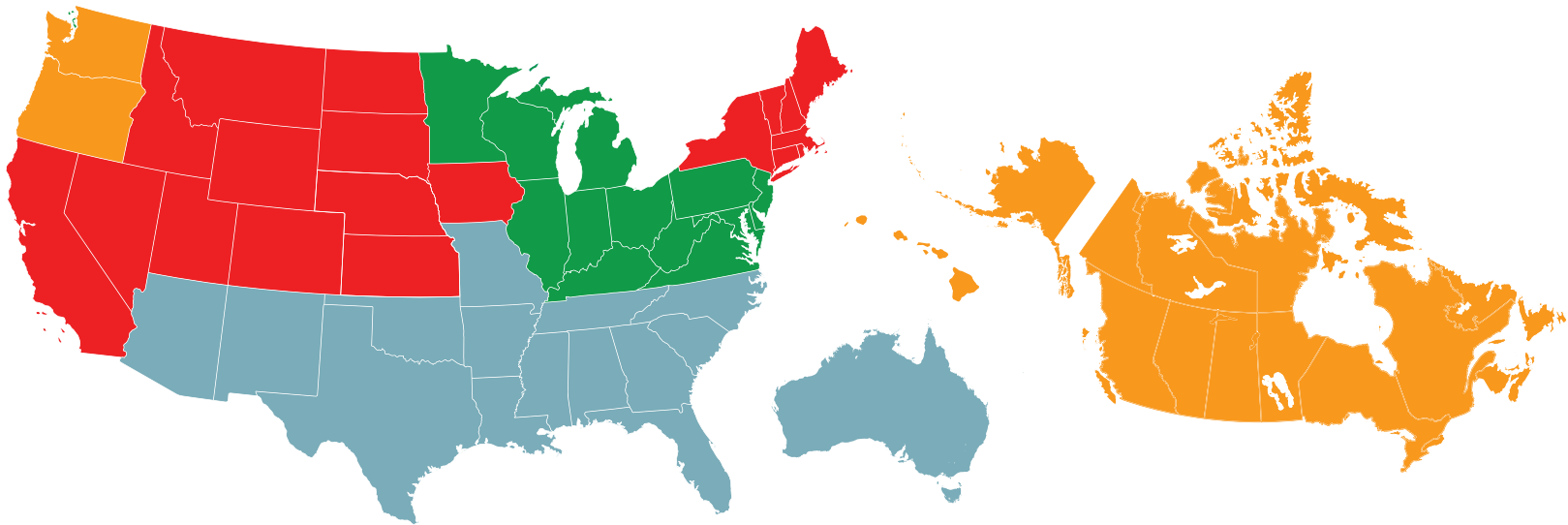
Round Bar Hitch

Item #	Part Number	Part Description	Qty.
1	92-04-9208	L-pin clip	2
2	93-04-9285	1/2" nylock nut	4
3	92-03-9205	L-pin	2
4	93-02-5150	L-bracket	2
5	93-02-9270	1/2" x 4" bolt (grade 5)	4
6	93-02-5350	Studded outside link plate	2
7	93-02-5200	Inside link plate	2
8	92-04-9228	1/2" nut	4
9	92-04-9290	1/2" lock washer	4
10	92-00-6000	Snap-up lever	1
11	92-03-9700	5/8" angle set bolt	1
12	94-02-0699	6,000 lb spring bar (single)	2
	94-02-0899	8,000 lb spring bar (single)	
	94-02-1099	10,000 lb spring bar (single)	
13	BD094-WS	Bar sticker	2
14	92-04-9640	3/4" nylock nut	2
15	92-04-9645	3/4" conical toothed washer	4
16	BD094-WH	Warning sticker	1
17	92-04-9625	Hitch pin	1
18	92-02-4100	2.5" drop x 5" rise adj. shank	1
19	92-04-9630	Hitch pin clip	1
20	92-04-9650	Spacer rivet	1
21	92-04-9655	Spacer washers	7
22	92-04-9635	3/4-10 x 5" bolt (grade 5)	2
23	94-02-1055	e2 round bar hitch head	1
24	--	Hitch ball	

Available Shanks

Part #	Description	MSRP
92-02-4213	4" drop / 7.5" rise / 12" length	\$114.00
92-02-4214	6" drop / 9" rise / 12" length	\$116.00
92-02-4315	8.5" drop / 12" rise / 12" length	\$118.00

# FASTWAY SALES TEAM



# FASTWAY SALES TEAM



Rich Elliott  
Sales and  
Marketing Director



Kim Dewsnup  
RV Sales Account Rep



Rob Stratton  
RV Sales Account Rep



Deven McCann  
RV Sales Account Rep



Pat Hunt  
RV Sales Account Rep



Mike Flygare  
ATO Sales Manager



Jason Irvine  
ATO Sales Rep



Dane Anderson  
ATO Sales Rep



Matt Darrington  
ATO Sales Rep



Tyler Ferre  
Inside RV Sales



Jason Binks  
Inside Sales Manager



# ***FASTWAY***

TRAILER PRODUCTS

fastwaytrailer.com

**Phone:** 877.523.9103

**Fax:** 801.377.6616

**Email:** info@fastwaytrailer.com

Like and subscribe for helpful tips and videos:



youtube.com/fastwaytrailer



facebook.com/fastwaytrailer



FWCAT0320