



Airstream Club International

# Region *X-tra*

 *Traveling the West*

## Newsletter



July 2023

[airstreamclub.org/region10](http://airstreamclub.org/region10)

Summer Issue

### **Officers & Committee Chairs**

President: Kathy Geese

[kathygeese@gmail.com](mailto:kathygeese@gmail.com)

1st Vice President: Florence Tramoni

[florenceftramoni@gmail.com](mailto:florenceftramoni@gmail.com)

2nd Vice President: Susan McPhee

[susanmcphee@comcast.net](mailto:susanmcphee@comcast.net)

Corresponding Secretary: Angela

Schock [angela.m.schock@gmail.com](mailto:angela.m.schock@gmail.com)

Treasurer: Ray Schmitt

[reschmitt@centurytel.net](mailto:reschmitt@centurytel.net)

Membership Chair: Lesa Welcker

[lesawelcker@hotmail.com](mailto:lesawelcker@hotmail.com)

Caravan Chair: Janet Soucy & Paul

Wheeler [paul.jan.wheeler@gmail.com](mailto:paul.jan.wheeler@gmail.com)

Nominating Committee: Carol Ortiz

[carolortiz1686@yahoo.com](mailto:carolortiz1686@yahoo.com)

Contributing Editor: Darlene

Caldwell [dcaldwell4076@me.com](mailto:dcaldwell4076@me.com)

Newsletter Editor: Carolyn White

[airstream355@gmail.com](mailto:airstream355@gmail.com)

Webmaster: Carolyn Beardshear

[cbshear@gmail.com](mailto:cbshear@gmail.com)

### ***President's Message***



I hope this finds everyone with their Airstreams packed and ready for the next adventure. It's hard to believe that two years have already passed and this is my final President's Message! Stepping into the role of WBCCI/Airstream Club International Region 10 President in 2021 was a sudden and unexpected opportunity, but it has been an incredible experience.

Meeting so many of you has been a true pleasure, and despite the significant time and attention this role demanded (which I'm sure resonates with others of you that volunteer!), I thoroughly enjoyed it. From gathering around rally campfires to sharing delicious food at potlucks and exploring trails together, these experiences have been enriching, and David and I are grateful for the friendships forged along the way.

I would also like to take a moment to express my gratitude to the Region 10 board members, committee chairs, and past officers. The list is long, and while I won't take the space to name everyone here, each of you knows the invaluable contributions you have made to both me and our fellow Region 10 members. From the depth of my heart, I extend a sincere thank you for your generous and unwavering dedication and support. Your efforts have played a pivotal role in shaping the success and growth of our region, and I am truly grateful.

These past two years have witnessed remarkable growth in both club membership numbers and the development of the WBCCI Constitution and Bylaws. The arrival of new members has infused fresh ideas and enthusiasm into our clubs. I've been deeply impressed by the *(continued on page 2)*

## President's Message *(continued from page 1)*

dedication of local clubs and individual members in warmly embracing newcomers who seek their place within our community and helping the newcomers find their tribe. As Airstream and adventure enthusiasts, we embody the spirit of exploration and actively seek out new and exciting experiences. I am mindful that some members may face limitations due to time and health concerns. Nevertheless, they remain engaged through local breakfasts, newsletters, club websites, and volunteering in capacities that suit their abilities. Once an Airstreamer, always an Airstreamer.

As a member of the International Board of Trustees, I wholeheartedly appreciate the tireless efforts of the "policy wonks" who diligently worked to remove outdated and misplaced language from our constitution, bylaws, and policies. It's all too easy for those items that should be discarded to end up tucked away in the attic of our minds.

Our Constitution defines "Who we are," the Bylaws outline "What we do," and the Policies detail "How we do it." While some may question the necessity of rules for a camping club, these governing documents collectively establish the structure, rules, and procedures that enable an organization to operate effectively and achieve its goals.

I want to credit Tom Smithson, a WBCCI volunteer and the outgoing International Chair of Constitution and Bylaws, for this insightful perspective. With the growth of our club and evolving needs, as reflected in our current membership exceeding 18,000 with a budget surpassing \$1 million, I am confident that a club that has fostered enduring friendships, memorable travels, and personal expression for over six decades will continue to thrive for another sixty years.

With that said, I am delighted to introduce Florence Tramoni, our incoming Region 10 President, effective August 1st. Florence has already begun her goal during her tenure of attending rallies at the seven clubs in Region 10 and eagerly anticipates meeting many of you at the upcoming International Rally in Rock Springs, WY.

Florence brings both experience and enthusiasm to the role of Region President, and her background as a business owner adds valuable skills to her repertoire. You'll often find Florence with her golf clubs and loyal Jack Russell terrier, Luna, accompanying her on her adventures. Join me in extending a warm welcome to Florence, and I eagerly anticipate supporting her in my role as Past President at the Region 10 Rally at Blackwell Island in Coeur d'Alene, ID, from May 8-12, 2024.

As you read this, I will have departed for the WBCCI International Rally in Rock Springs with a caravan of my fellow Airstreamers. Just a gentle reminder that we are a club comprised of volunteers and without all of you that step up to help, we wouldn't exist. If you want to become more involved in leadership, rallies, or the many behind-the-scenes jobs that make everything run seamlessly, contact your local club president. Wagons Ho!

~ Kathy Geese, President, Region 10



## Congratulations!

Two of our Region 10 members, past Region 10 president Terri Warren and soon-to-be past president Kathy Geese, were elected to serve on the nine-member, 2023-2025 ACI Executive Committee.

Their two-year term begins on August 1. Much success to Terri, Kathy, and the entire Executive Committee in guiding the club's future.



## Editor's Desk ~ Carolyn White

**Wanted:** Your photos and write-ups about a rally you attended, such as your local club rally, any favorite "One Pot Wonders" recipes, your favorite modification, or ??? With many of you returning from Rock Springs this summer, your editor expects to receive reports of the roads traveled with accompanying pictures. The deadline for newsletter submission is September 15 for the Fall issue. Email [airstream355@gmail.com](mailto:airstream355@gmail.com) with your newsletter contributions.



New Region 10 ACI flag fresh out of the package!

This quarter enjoy a recap of the caravan experience and a visit to the Mother Ship. To get you there safely, Ray Putnam's Tech Talk Times has some excellent information on *Tires - Everything Rides on Them*.

Our Region 10 president, Kathy Geese, wanted our logo on a flag. Your executive went through the process for approval from Headquarters. The only required addition was the original WBCCI logo,

which is placed at the base of the US and Canadian flags.

The 3' x 5' flag is two sided and is available through Amazon for about \$24 plus shipping. If you would like a custom Region 10 flag, please contact me at [airstream355@gmail.com](mailto:airstream355@gmail.com) and I will send you the artwork, the Amazon link and instructions for uploading and ordering. Safe travels!



## Region 10 Logo Wear and More!

All of our Region 10 products are sold and shipped by TeePublic, with a "Satisfaction Guarantee." TeePublic ships internationally so our Canadian clubs can shop as well.

For each sale, your Region 10 receives a commission. The income from sales of merchandise will be used to support officer travel to attend installation rallies for the seven clubs in Region 10.

When you visit the storefront [here](#), you will see several designs listed. Currently, the men's and women's classic Tee shirts have an option for a small logo on the front and larger logo on the back, indicated by the description under the design icon. This Region 10 version is available [here](#). Scroll down for other product options, such as magnets, stickers, tote bags and travel mugs.

As we receive the individual unit logos, we will feature the unit's logo on the front and Region 10 logo on the back. At this time, we have the Alberta-Saskatchewan Unit's logo in all the products, which you can view [here](#), the Oregon Airstream Club's logo [here](#) and Idaho's [here](#).

TeePublic has excellent "fitting review" information and great customer support. Check out all the design options. Please note that the women's sizes tend to run small.

If your unit wants to display their logo on the Tee shirt front and have it on other items, please contact [airstream355@gmail.com](mailto:airstream355@gmail.com) for information.





## Long Range Planning at the Mother Ship ~ Kathy Geese



In May, Airstream, Inc. invited the WBCCI/Airstream Club International (ACI) Board of Trustees to hold our long-range planning meeting at the new Airstream Factory in Jackson Center, Ohio. During the three-day intensive meeting, we focused on both short-term and long-term goals for our club. One crucial topic discussed was the need for enhanced support to our local clubs, including training and recruiting of leadership, on-boarding new members, and assisting

with websites. Making the ACI website more user-friendly was identified as a priority, and this initiative is already underway. We also addressed the rising costs associated with printing and distributing our club's magazine the Blue Beret. Marketing research indicates a shift in members' information preferences over the past two decades, with increased reliance on the internet. The website needs to serve as a centralized and constantly updated platform for members to find rallies, caravans, and relevant information. The Blue Beret is an important part of our club's history and will continue to be so. Potentially there could be fewer issues that focus more on articles relevant to Airstream ownership with the time-sensitive information shifted to the internet where it can be updated as needed.



Board of Trustees Meeting



New Airstream Factory

One of our club's notable strengths lies in providing new Airstream owners with turn-key experiences through our rallies and events. Due to the surge in camper purchases during the pandemic, finding campsites during peak seasons has become a challenge for new campers. The excitement of owning their dream rig is often dampened by the arduous task of securing a place to camp. Offering pre-planned rallies to new Airstream owners has proven to be a valuable benefit. Within my "home" club, I have witnessed new members attending rallies with trepidation, only to be warmly welcomed and fully included in the events. With ample support and encouragement, they gradually transition to co-hosting with experienced members who impart their knowledge of hosting. By the third year, these new members are confidently organizing their own rallies.

For those who haven't had the opportunity to visit, the new Airstream factory, opened in January 2020, is a must-see attraction for anyone passing through the region. The factory showcases cutting-edge technology employed in Airstream's manufacturing processes. Adjacent to the factory, the Heritage Museum exhibits historical trailers generously donated by owners across the country. The museum provides a captivating overview of Airstream's design and manufacturing legacy spanning the past 70 plus years. *(continued on page 5)*

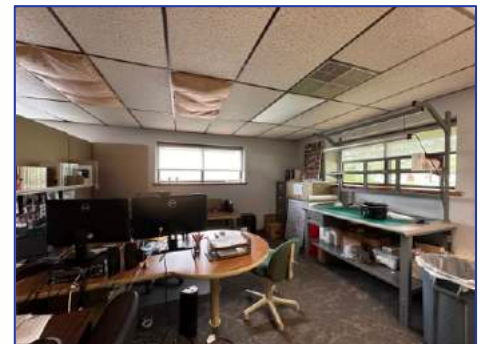
## Long Range Planning at the Mother Ship (continued from page 4)



During our visit, Bob Wheeler, President of Airstream, Inc., spoke to our board about his company's renewed commitment to supporting our clubs nationwide. Their research has highlighted the significant role played by club membership in fostering long-lasting friendships among new Airstream owners and providing them with invaluable technical support.

In addition to the factory tour, we had the opportunity to visit the WBCCI/ACI offices, conveniently located a short drive away. It was inspiring to witness the dedication of our hardworking headquarters employees. However, it became apparent that the current office building, donated by a member many years ago, no longer adequately accommodates our club's growing needs. The building urgently requires significant maintenance, including addressing a leaking roof. Given its deteriorating condition, it might be more practical to allocate funds toward replacing the building with a more suitable one capable of supporting our expanding staff. The Executive Council explored various options and will provide updates as we evaluate the best solution to this issue.

With the new partnership with Airstream, Inc., there may be opportunities to incorporate camping facilities for Airstreamers touring the factory and museum or bringing their rigs to Jackson Center for repairs. It was truly a unique experience to witness a factory that continues to provide service and support to its products long after the initial sale. If your travels find you anywhere in the vicinity of Jackson Center, Ohio, I highly recommend a visit.



The WBCCI/ACI Offices

All photos courtesy Kathy Geese.

Above: Displays inside the Airstream Heritage Museum



## Meet the New Treasurer Bryan Paul Grassi



I graduated from Pacific Lutheran University in 1980 with my bachelor's degree in education. In 1996 I continued my education to achieve my master's degree from City University. During my teaching career, I taught a variety of subjects which included US/Washington State history, business, math and physical education (PE). I taught in Maple Valley, North Bend, and most of my career in the Bethel School District in Spanaway, WA. In 1991 I was elected by other coaches as President of the Bethel Coaches & Activities Association. I represented members while bargaining with the district to negotiate future contracts for the coaches and activities leaders throughout the district.

In addition to my classroom work, I coached football, basketball and baseball and was appointed as Bethel Recreation Coordinator for the district managing the nonprofit. Duties included managing a budget for the recreational events for the district, annual audit, scheduling and managing coaches, grounds crews, referees and concession workers. This work also included working with and managing a volunteer Board of Directors.

I was recognized by my peers for my strong negotiation skills and was elected President of

## Thank You!

Our Region 10 Treasurer, Ray Schmitt, is retiring July 31, 2023, the end of our fiscal year.

Ray has been as treasurer for seven years in service to five Region 10 presidents.

On behalf of the Region 10 officers, committee chairs, and membership, we thank him for his dedication and service.

the Bethel Education Association where I was responsible for labor relations, employer negotiations, organizing and soliciting members, managing and training contract teams, executive board, budget committee, lobbying the state capitol, elections of officers, and bylaws. I also represented the association individually or with a team at local, regional, state and national meetings and conventions. In 2021 I retired from education in this position.

In February 2021 we bought our first Airstream trailer, a 20-foot Caravel. We have camped in our trailer approximately ten trips each camping season and have enjoyed our adventures. We bought our trailer during the pandemic when you had to order your trailer, then wait for its arrival. We knew we would join the Airstream Club before we even took possession of our trailer. Our first rally with the WA Unit was in Kelso, WA, in October of 2021 (Halloween Rally). Immediately, we realized that we made a great decision to join the Airstream club. The people in the club are what makes it a great organization and we look forward to our future events. I look forward to the opportunity to contribute my skills to the success of our club.

My wife, Lori, and I have lived in Tacoma, Washington, for decades and enjoy traveling the state, and country in our Airstream with our fabulous Airstream friends.

*(Bryan's term as Region 10 treasurer starts August 1, 2023. - Ed.)*

## The Region 10 Tech Talk Times ~ Ray Putnam



Hello out there. There has always been a lot of discussion regarding tires. In this issue we are presenting a tire article that should help many of you in deciding what tire is right for you. At least, that is the idea. Enjoy. I am looking forward to a year near home rallying with Airstream friends. Please feel free to send in your comments and suggestions for future articles. Thank you. [rayputnam@icloud.com](mailto:rayputnam@icloud.com)

### Tires - Everything Rides on Them

Tire manufacturers provide weight charts by tire size and type as a function of weight carrying capability. To maximize tire life, you should make sure that the entire tread is in contact with the road surface and the tire is not overloaded. To do this, you must weigh each tire in place on the tow vehicle and trailer. This should be done with the rig fully loaded and the hitch correctly adjusted. The number on the side of each tire is the maximum allowed pressure above which the tire is unsafe. This is particularly important on hot days and at high speeds. For many trailers it turns out that the loads are such that the running air pressure is quite close to the maximum allowed. The tires on a particular axle must be at the same pressure.

Correct tire inflation is a key component in tire care. The maximum inflation pressures for your tires are indicated on the tire sidewall. Since RVs can be loaded with many different configurations, the load on each tire will vary. For this reason, the actual air pressure required should be determined based on the load on each individual tire. Inflation pressure should be adjusted to handle the tire carrying the heaviest load, and all tires on that axle should be adjusted to this standard. Each manufacturer provides load and inflation tables specific to their products to help you determine the correct tire inflation pressure for your vehicle's loading.

Underinflation brings a higher risk of susceptibility to damage due to road hazards, reduces casing durability, and causes a loss in fuel economy plus uneven or irregular tire wear. Severe or prolonged underinflation brings about an increased risk of tread separation.

Proper inflation is listed in two places. There will be a sticker located somewhere around your RV door, which has the GVWR, tire size, and inflation pressure. The tire itself will list the cold inflation pressure on them (best source). Under inflated tires will bend and flex the tire more as the RV travels down the road. This causes heat to build up, and remember, heat is the arch-nemesis of tires.

**IMPORTANT:** It is a common practice for RV owners to lower tire pressure in their search for a smoother ride. This is not only dangerous, but it is relatively ineffective, as the difference in ride quality is not significant. When minimum inflation pressure requirements are not met, tire durability and optimum operating conditions are compromised. Tire inflation pressure should always meet at least the minimum guidelines for vehicle weight.

Check your tire pressures at least once a month and before each trip and each morning you drive during a trip. Tire pressure should be checked cold or before you have driven that day, as tire pressure ratings have been designed with typical running heat/pressure build-up in mind. Remember to check the air pressures of the inside tires on dual fitments and make sure the valves and caps are free of dirt and moisture.

Always check the manufacture date before you buy your tires. There is a 4-digit number stamped on every tire's sidewall. Look for a code starting with the letters "DOT." At the end of the string of letters/numbers, you will see a 4-digit number inside an oval. The first two numbers indicate the week, and the second two numbers are the year. If you see only eight digits (or less) printed after the letters "DOT", the last four digits are not the manufacture date. In this case: look on the other side of the tire for a DOT code with at least 12 digits. The last four digits will be in the week and year format.

Tire pressure is what enables your RV tire to support loads. *(continued on page 8)*

## Region 10 Tech Talk Times ~ Ray Putnam (continued from page 7)

Overloading your tires can have serious consequences for passengers and your RV. Too much weight can cause stress on your RV's suspension system, brake failure, shock absorber damage, handling and steering problems, irregular tire wear, and possible tire failure. If you discover that your tires cannot handle the load, lighten the weight of the load, or install tires with a higher carrying capacity. Remember to consult your owner's manual or the RV manufacturer for information concerning selection and installation of new tires. Select a tire with load carrying capacity designed to handle the maximum load point. For each axle determine the correct inflation pressure needed for that size tire to handle the maximum load. Inflate all tires on that axle to the same inflation pressure.

**How much air should I put in my RV tires?** For your tow vehicle there are a few answers depending on the number of passengers and how heavily the vehicle is loaded. Just check your manual. For the trailer or motor home however, there is no easy answer. Get weighed when your RV is fully loaded with water, propane, and equipment. This should be done for each wheel of the vehicle for a motor home and for each side for a trailer. Now use the manufacturer's chart to determine the air pressure versus actual weight for the front single tires, the rear duals and the tag axle for your tire size and type. The air pressure should, of course, be the same on both sides for the front tires as well as the rears. Just use the highest air pressure required in any individual tire. Check this at least once per week with a quality gauge since your lives literally depend on your tires being properly inflated. You can always be slightly over-inflated with no problems. As the tires heat up the pressure will increase; just be sure you check them when they are cold. Tire blowouts usually cause collateral damage, especially on trailers.

Overloaded tires cause flexing and add dangerous stress to your tires, resulting in blowouts. Your travel trailer is not intended to have more weight than the GVWR (Gross Vehicle Weight Rating), states. GVWR is a measurement of all the things in the RV plus the weight of the RV itself. On top of the GVWR, each tire has a maximum load rating as well. Look for an index on how to find your tires' load index.

There are two ways to find out if you are overloaded. Go to a truck stop with a CAT scale without your RV and weigh your towing vehicle, then go over the same scale with your RV attached. Subtract your vehicle's weight from the second weight, and you have the total weight of your RV.

The second method requires you to find a place that specifically weighs RV's. They can weigh each tire separately and tell you if any tire is overcapacity.

**Speed:** If your RV is equipped with ST tires, they are not meant to be driven over 65 mph. There is an exception for Goodyear Endurance tires. See elsewhere in this article.

**Five Tire Care Tips To help make regular tire maintenance and service simple:** 1. Regularly inspect your tires for damage. 2. Keep your tires properly inflated to maximize performance (cold inflation pressure readings should be taken daily while traveling and monthly if in storage). 3. Make sure your Gross Vehicle Weight does not exceed the Gross Vehicle Weight Rating (have your RV weighed). 4. Make sure the load on your tires is evenly distributed.

5. Perform tire and wheel maintenance regularly.

**Bias Ply vs. Radial Tires** - When it is time for new tires for your trailer, it is better to invest in radial tires. While bias ply tires are safe and well made, they do not provide as smooth a ride as radial tires. Bias ply tires also tend to wear out quicker and use more fuel than radial tires. By contrast, radial tires are fuel efficient, create less friction, and can be used in any type of weather.

Low air pressure will decrease the life of the tire by approximately 25% (low air pressure creates heat due to increased flexing of side walls) and decrease gas mileage by 5%. Low air pressure can also increase tire wear by 10%. Tires can lose one pound per square inch (psi) per month under normal conditions. Additionally, tires can lose one psi for every 10° F temperature drop. Check air pressure monthly and routinely (including your spare). Never release air from a hot tire to reach the recommended cold tire pressure. Normal driving causes tires to run hotter and air pressure to increase. If you release air when your tires are hot, you may dangerously under inflate your tires. Tires should sit at least three hours after driving before checking for cold tire pressures. If you must add air when your tires are hot, add four pounds psi above the recommended cold air pressure. Recheck the inflation pressure when the tire is cold. (continued on page 9)



## Region 10 Tech Talk Times ~ Ray Putnam (continued from page 8)

According to guidelines put out by the Rubber Manufacturers Association (RMA), any tire that has been run at less than 80% of recommended air pressure for the load it is carrying should be inspected for possible damage. For proper tire inflation know your tire's load carrying capacity. Under-inflated tires can cause "excessive wear on the outer edge of the tire and heat build-up." When under inflated, the tire has more room to flex over bumps, rocks, rails, and road, with each flex adding an opportunity for your tire to become damaged. Over-inflated tires on the other hand can cause excessive wear on the center of the tire, leaving the tire more vulnerable to damage from sharp corners, objects, or to a break in the tire itself. This can lead to a tire blowout.

Filling a tire too full also causes the rubber to be taunt and increasing the likelihood of the rubber breaking rather than bending over the road.

Heat affects tire performance. The amount of flex or heat generated in a tire will increase the risk of damage to a tire. Heat damage is not necessarily instantaneous. Excess heat will cause the compounds in the tire to work out of the tire prematurely leading to what is referred to as "dry rot." Tires suffering heat damage previously may appear to fail for no apparent reason later in their life. The factors directly contributing to the amount of heat generated through tire flexing are: Size of load being carried, speed you are driving, distance traveled, inflation pressure of tire, tire construction/rubber compound and the ambient temperature it is being operated in or on (such as hot asphalt).

The hotter a tire runs the less efficient it becomes and the more susceptible it is to damage. When a tire runs hot, tire wear rate increases; tires are more prone to cutting; heat increases the rate of casing fatigue (dries out tire compounds); it increases the chance of heat separation; and as it increases the chance of tire burst, the greater rate of repair failure.

When researching for information on tire failures the two main topics that keep coming up are, damage from the heat that can be generated in tires and inflation pressures, both under- and over-inflation. A tire can look perfectly normal but may have suffered internal damage.

**ST stands for Special Trailer Service.** ST tires have been specifically made for trailers. Special trailer service tires feature heavy-duty construction and accommodate higher inflation pressures to provide the load capacity necessary to match many trailer applications and payloads. The major difference is reflected in the polyester cords used in ST tires. These cords are bigger than they would be for a comparable LT tire. Typically, the steel wire also has a larger diameter or greater tensile strength to meet the additional load requirements. Because of the heavier construction for an equal volume of air space, an ST tire is designated to carry more load than a LT tire. Their stiffer sidewalls help control sway for enhanced towing stability, and they offer more bruise resistance than typical passenger tires. ST trailer tires have a maximum speed rating of 65 miles per hour and on the average can be used for three to five years. On top of the internal differences, the rubber used in ST tires typically has more chemicals that resist aging and UV rays. The rubber compound itself is usually harder, giving it more sidewall strength. There is one ST tire on the market, the Goodyear Endurance, which has an N speed rating allowing for a max speed of 87 mph. You can find the speed rating after the load rating on a tire. If your ST tire has no letter, then the speed rating is 65 mph.

LT stands for Light Truck tires, and they are designed for heavier duty trucks and SUVs that need to carry more weight. They have thicker sidewalls and heavier duty construction. They give a stiffer ride. Manufacturers attempt to develop these tires to hold up and dissipate heat under a load while still flexing and rolling enough to provide a ride that is as comfortable as possible. Their tread is designed to have maximum traction under various road conditions.

Some Airstreamers use 10 ply LT tires. Going to LT tires requires using 16" wheels because there are no LT 10 ply tires for 15" wheels. If you go to steel wheels you probably won't have to torque the lug nuts as often as you would for an aluminum wheel because the coefficient of expansion for steel and aluminum are different. Michelin has a 16" 10 ply LT tire (50 K 80 psi tire). Les Schwab has a 16" 10 ply LT tire, (60 K 80 psi tire). There may be others.

Most people don't put enough miles on their RV tires to wear them out. (continued on page 10)

## Region 10 Tech Talk Times ~ Ray Putnam (continued from page 11)



**For all tires manufactured after 2000. Tire Identification number - DOT U2LL LMLR 5107 means the tire was manufactured the 51<sup>st</sup> week of 2007.**

But tires do have an expiration date. Tires on a trailer should be replaced every 5 to 6 years. That is generally a good rule for LT tires on a trailer. Trailer tires are constantly under a heavy load, and they tend to sit in storage for long periods between use, which causes them to break down faster.

Before each trip, inspect your tires for any cracks around the treads or the tire's sidewall. There should be no bulges or defects of any kind. Remember, the 5 to 6-year rule only applies if your tires aren't showing defects before that time. Many factors may require them to be replaced sooner.

Some RVers just want LT tires on their travel trailers and fifth wheels that didn't come with them. Concurrently, some RVs come with LT tires from the factory. However, if you want to switch to LT tires, you must make a few considerations:

(1) LT and ST tires do not have the same load rating when comparing size for size, so make sure whatever tire you choose has a sufficient load capacity for your RV. If the tires you are switching to have a higher load capacity, that does not automatically increase your GVWR. It's never safe to overload your RV.

(2) You will probably have to choose a larger tire size to find an LT tire of equal or greater load capacity. Make sure there is sufficient clearance all around the tire. Look for 215 width tires as they provide more clearance for the shock absorber on your trailer. Some Airstreamers have had good luck with 225 width tires. Check the clearance off the shock absorber once the tire is installed. (3) When you change your tire size, you will need a properly sized wheel as well. On your Airstream look for 6", zero offset wheels. FYI Powder coated steel wheels may outlast a chromed steel wheel.

### NOTES:

It may be necessary to inflate your tires at a truck stop or truck service center in order to achieve adequate air pressure for your RV's needs. Carry at least an 80 psi 12V pump.

Only permanent air seal metal valve caps and stainless-steel valve stems should be used (less potential leakage).

Be safe - if a tire has been run 20% under inflated, it must be dismounted and inspected by a trained professional. It should not be aired up without a full inspection or without using a safety cage. Use a calibrated gauge. If your tire is rated for higher inflation pressures, a special gauge will be required designed for larger tires.

Maintain mated duals at equal inflation pressures.

Don't bleed air from warm tires to reduce pressure buildup. Don't inflate tires to cold PSI rating beyond rim specifications. Don't run one dual at low inflation pressure or flat.

Check your lug nuts - you want solid steel lug nuts.

Additional information: (1) Blue Beret Feb. 2007 Infrared Tire Temperature Data. (2) Buying new tires - log on to AirstreamClub.org; click on Member Benefits and then click on Michelin Advantage Program. You will usually save about 30% off MSRP. BFGoodrich and Uniroyal tires are also included in the Michelin Advantage Program.

See you safely down the road. [rayputnam@icloud.com](mailto:rayputnam@icloud.com)

## Airstreams - Caravans - Are We "Getting It?" ~ Paul Wheeler, Region 10 Caravan Co-Chair



Region 10 Caravan Chairs Paul Wheeler & Janet Soucy in Baja

ever be a candle. They never let it burn.

In tune with that, I want to ask if we're letting our Airstreams be Airstreams? Airstreams were designed for a purpose. Wally Byam made it very clear. Airstreams were designed to provide a comfortable home while the owner was exploring the wider world. They are meant to be a support system enabling those traveling to meet new peoples, explore new places and realities, see, appreciate, and learn from people and places they might never otherwise have known. AND they were designed to do all that as their owners traveled with like minded others and shared the support and companionship such travel makes possible. Airstreams were designed to caravan.



Caravan in Baja California

We've allowed our Airstream to seek and fulfill its purpose and, in so doing, help us to grow, to change, to become more fully the best we can be. It's amazing being exposed to this life, to these people, to this way of exploring.

But here's the problem. I think there are over 16,000 rigs in our Club. If everyone went on one caravan a year and caravans had 30 rigs on them (and that's a lot) then we would need 533 caravans per year. Look at the back of your Blue Beret. Count the caravans offered. Now go to the websites of each Unit and count the total number of local caravans. You'll see we have a bit of a problem. There aren't enough caravans offered. I'm not discounting Rallies and informal gatherings. They are great. *(continued on page 12)*

Ever gazed at something and wondered if it's fulfilling its purpose? Like a candle. Candles have one purpose, to bring light into darkness. Oh, lately there's a move to turn candles into room decorations. But that's not what a candle is. It only fulfills its purpose as it spends itself to bring light.

Look at your Airstream. Trailer or motor home, have a look. Ask, is it fulfilling its purpose, the reason it was designed, the reason why, all these many years later, it's still "the" icon. When I think of purpose, I'm not talking about what attracted you to buy it. I mean, some people buy candles because they want a room ornament, then they go and refuse to let the candle



Caravan to Baja

My wife, Janet, and I have been on several Airstream caravans. We've traveled around Mexico, across Canada and toured Newfoundland. We've caravanned around British Columbia with our home Unit and all over California with the Northern California Unit. We joined the WBCCI (now ACI) in 2013 and never looked back. We've met amazing people, cemented new, lifelong friendships. Some of those are life-changing.



California Dreaming Caravan



## Airstreams - Caravans - Are We "Getting It?" *(continued from page 11)*



Caravan in British Columbia Canada

But the honest to goodness Wally Byam truth is that caravans are where its at and everyone deserves/needs opportunity to get on at least some.

I don't think we're doing all we can to support each other and our rigs to get the full Wally Byam experience. Here's my challenge. There is someplace, whether local or distant, that you've thought you'd like to go with your Airstream. Get together with one other person in your local Unit and start talking about a small group of you going there



Caravan in Mexico

together (a caravan). You don't know how to pull off a caravan? Talk to your Unit Caravan Chair or, absent one of those, your Unit President. Get on the website and see the great resources there to help you learn.

I can guarantee that if you've thought of a trip, someone else already wants to go. I can guarantee that the folks in your Unit would REALLY love your help and support and thoughts about new adventures. Go look at your Airstream right now ... I can guarantee it is waiting and hoping that you'll create or work with others to create the chance for it to be what it was designed for.

Come on folks ... let's get caravanning!



Caravan in Williams Lake, British Columbia

### Did you know . . .

*In 2023, three WBCCI National Caravans - the Canadian Rocky Mountain, North to Alaska, and Discovering Cascadia - are entirely in Region 10?*

*The Springtime in the Rockies and the Nuts for Ruts: Finding the Oregon Trail, both which are back in 2024, terminate in Region 10 as well.*



Thanks to Janet Soucy for the photos!

## National Potlatch Reunion ~ August 1<sup>st</sup> - 6<sup>th</sup> 2023

The Washington Airstream Club is proud to announce the return of the National Potlatch event rally after years of absence. This will be the opportunity to once again spotlight our rich history in the WBCCI and bring Airstream members from across the United States and Canada to the beautiful Pacific Northwest.

**Registration closes July 15, 2023. Visit our website or click on this image for registration & more information.**

### Join us for five days of fun, food & activities!

- Daily Continental Breakfast • Four Dinners including Salmon Bake • Daily Seminars • Tours to WA State Capital, Crystal Mountain, Deep-sea Fishing & More!
- Happy Hours with old-time photos • Live Music • Games

•Courtesy of volunteers associated with Friends of Willi & Joe, Saturday features a display of Vietnam Era vehicles, equipment, field hospital, hooch & historians to answer your questions.

Lots of local attractions to explore on your own or carpool with others • Mt. Rainier • Wineries • Craft Breweries • Seafair • Golf • LeMay Car Museum • Olympia Flight Museum • and More!

**Washington Land Yacht Harbor~9101 Steilacoom Rd SE~Olympia, WA 98513**

(Right) Visitors to the Washington Land Yacht Harbor and Potlatch will be greeted by the new Lighthouse at the entrance. The Rhododendrons bloom in May/June, losing their flowers by the end of June

(Below) Harmony Hall from the Terraport. (Photos courtesy of Carol Ortiz)





## Local Hiking - Olympia WA ~ Kathy Geese

There are lots of great trails in our area and if you don't have the [AllTrails](#) App, it is free to download. If you have a day and are going to Mt. St. Helens, the trails that lead out from the Johnson Point Observatory at the top by the observatory offer great views of the mountain. Don't miss the film in the visitor's center! Free admission with the America the Beautiful pass.

Below are three of my favorite easy trails that are near the WA Land Yacht Harbor.

### **[Billy Frank Jr. Nisqually National Wildlife Refuge](#)**

100 Brown Farm Road, Olympia, WA 98516 (2.8 miles)

With easy access off exit #114 on I-5 in Olympia, Washington, this National Wildlife Refuge is an awesome place to connect with nature. It's a 5-6 minute drive from the WA Land Yacht harbor. Year-round, easy flat trails meander through a diversity of habitats and visitors can experience exceptional wildlife viewing opportunities. Exhibits in the Visitor Center provides an overview of the Nisqually River Delta. The mile-long Nisqually Estuary Boardwalk is a flat, leisurely walk that extends over the estuary. Free admission with the America the Beautiful pass.



### **[Squaxin Park \(formerly Priest Point Park\)](#)**

2600 East Bay Drive NE, Olympia, WA (just off downtown and about a 20 minute drive)

This trail is considered moderate but with lots of steps and is well maintained with steep ravines, cliffs, and seasonal streams. Approximately 5 miles round-trip and plan on 1.5-2 hours. From I-5 southbound, take exit #105 signed for the Port of Olympia. Continue onto Plum Street SE for a little more than half a mile. This road turns into East Bay Drive Northeast. Stay on the road for 1.5 miles, and enter the park, free parking areas are on the east or west side of the road. If you park on the east side, you will walk over a bridge to the hiking area. Enter the trailhead just north of the west side parking area where a map shows the various trails. Ellis Cove is tucked away inside the park and the Ellis Cove trail leads down to the water with beautiful views of downtown Olympia and the State Capitol to the south.

A perfect afternoon is to hike this trail and then head over to Whitewood Cider Tasting and Tap Room, 728 4th Ave E, Olympia. Great food trucks next door and Whitewood allows you to bring food inside or on their deck. They offer samplers and the cider is amazing. Open at 3:00PM Monday, Wednesday, Thursday, and at noon on Friday, Saturday, Sunday. Closed Tuesdays.

### **[Sequalichew Trail](#)**

1700 Civic Drive, Dupont, WA (about 35 minute drive)

Head north on I-5 to the Dupont Center Drive exit #118 off I-5 and turn west towards the village and the Sound. Follow the signs to City Hall and the Dupont Police Station. Turn left on Civic Drive and park at the police station. You will see the trailhead there (a porta-potty is located at the trailhead entrance). 1.5 miles (3 miles roundtrip) on combination paved and gravel to the sound and beautiful views of Anderson Island, a beached ship, and if you are lucky, dolphins!



## Region 10 - The Place to (National Event) Rally!

### Potlatch National Event Rally

August 1-6, 2023

Join us for this fun-filled five-day rally at the Washington Land Yacht Harbor (WLYH), the only "Airstream Only" campground on the West Coast! Traditional salmon bake, optional tours including deep-sea fishing, gondola rides at Crystal Mountain, and the beautiful State Capital building filled with historical Tiffany chandeliers. This is the perfect location for exploring the beautiful Pacific Northwest.

Potlatch begins about a month after the 66th annual International Rally in Rock Springs, WY ends, and there are a lot of places to see between Rock Springs and Olympia, WA including several national parks between here and there...many things to spend a month seeing.

Another good travel stop to and from WLYH is Baker City, OR - birthplace of Airstream founder Wally Byam, where a [city museum](#) has Byam memorabilia.

There's plenty more to explore on your own once you arrive in the Olympia area, including:

- [Mt Rainier](#) ~80 miles from WLYH (National Park Pass / day pass required)
- [Tacoma](#) waterfront ~28 miles from WLYH
- [Point Defiance Zoo & Aquarium](#), Tacoma, WA ~29 miles from WLYH
- [LeMay-America's Car Museum](#) (largest private car collection of vintage vehicles), Tacoma, WA ~22 miles from WLYH
- [Vance Creek Railriders](#), Shelton, WA ~38 miles from WLYH - Pedal through the historic railroads on unique four-wheeled quadricycles the trip is 2 hrs/13 miles round trip. Reservations are the best way to go.
- [Pike Place Market Seattle, WA](#) ~54 miles from WLYH - the famous fish market! Free; great place to have lunch - lot of vendors/food booths.



- [Seattle Space Needle](#) and [Seattle Center](#), Seattle, WA ~56 miles from WLYH - Lots to see, with the Pacific Science Center, Seattle Children's Museum, MoPOP, and Chihuly Garden and Glass

- [Seafair](#) Weekend Festival, including the Seafair Airshow featuring the U.S. Navy Blue Angels - the weekend of Aug 4-6

- [Billy Frank Jr. Nisqually National Wildlife Refuge](#) ~3 miles from WLYH

- [Hands On Children's Museum](#) ~9 miles from WLYH

For additional information or to register: [Potlatch National Event Rally](#)

Questions? Contact Donna Bryson [clarkbryson@comcast.net](mailto:clarkbryson@comcast.net) or (360) 271-6868

## Region 10 - The Place to (National Event) Rally!

### Pendleton Round-Up National Event Rally

September 11-17, 2023

Giddy Up all you rodeo lovers and wanna-be cowboys and cowgirls! If you have never been to the Pendleton Round-Up, you need to add it to your bucket list. You will get a chance to meet and dine with the Pendleton Rodeo Court and Indian Princesses, get a behind-the-scenes tour of the rodeo, and attend the Happy Canyon Night Show. Experience the Westward Ho Parade, the only parade without any motorized vehicles.



Tickets are also available for the Pendleton Underground Tour for a lively look into Pendleton's infamous and entertaining past. We share breakfast with the local track team with Wally Byam's favorite: Oatmeal and Ice Cream. There is nightly entertainment downtown including live bands, local food, and shops. You can purchase extreme bull riding tickets on your own for Monday and Tuesday (finals).

We will be camping in a lovely green community park surrounded only by Airstreams about 1 mile from the arena. Transportation to various events is available and pick-up is right at the park. Of course, you can shop and tour the local Pendleton Woolen Mills for that blanket you know you need for your Airstream.

For additional information and registration, [Pendleton Round Up National Event Rally](#)

Questions? Contact the hosts, [Amy D'Abbraccio](#) and [Deborah Bede](#)

### Sun Valley Jazz Festival National Event Rally

October 17-22, 2023

Music lovers won't want to miss this one! Over 40 of the best musical groups - some from around the world - 200 performers in all - take the stages daily in the several venues at the Sun Valley Ski Resort, nestled in the heart of the Sawtooth Mountains, during the peak of autumn colors. Sun shining through the golden aspen leaves makes for spectacular scenery for biking, hiking and fishing. From Orlando, New



Orleans, St. Louis, Sacramento and places in between, musicians arrive in Sun Valley ready to make musical memories. There's vintage jazz, big band jazz, swing, zydeco, blues, cabaret and more music played and sung by soloists, duets, small combos and big bands. ....**The Midiri Brothers, Yve Evans, Bob Draga, Cornet Chop Suey, Carolyn Martin Swing Band, Bruce Innes Trio, Tom Rigney & Flambeau, Gator Nation, and Tom Hook** are regular performers, to name a few of the groups expected at this year's festival. The festival is organized into 1-hour sets with time between to move to a different venue for the next. You can choose to spend most of your time in one venue and see most of the groups or follow your favorite from place to place. See the Sun Valley Jazz and Music Festival [website](#) .

For More Information and To [Register](#). Questions? Contact the hosts, Bob and Darlene Caldwell: [airstream267@gmail.com](mailto:airstream267@gmail.com) or (780) 964-5444.

## One Pot Wonders - Pasta-bilities ~ Salmon & Shrimp Pasta ~ Carolyn White

Here's a one-pot meal for two using your 6 quart Dutch oven or pasta pot and leftovers or pre-cooked ingredients.

### Ingredients:

8 oz. Rotini pasta	3-4 oz of leftover cooked salmon or canned salmon
1 T avocado or olive oil	4 T creme fraiche
1/2 onion finely diced	1 T fresh squeezed lemon juice
4 oz. Precooked or EZ Peel Raw White Shrimp	1 T chives chopped

1. Cook the pasta per the package directions. Drain using colander and leave in colander.
2. Saute the diced onion in the oil over low heat for 3-4 minutes.
3. If using raw shrimp or prawns, ensure they are thawed. Add to the onions and cook until they change color, about 2-5 minutes, depending on size.
4. Return the pasta to the pot. Remove any skin and bones if using leftover salmon. Flake the salmon using two forks. Add the salmon, crème fraiche, and lemon juice, Gently combine.
5. Cover and let sit for 2 minutes over lowest heat stirring occasionally.
6. Sprinkle with chopped chives and serve.

Cooks Note: This recipe can be gluten-free if a rice pasta is used. When using rice pasta, be careful not to over cook. After cooking the pasta, it helps to dry out the pot to prevent oil spatters. Bon appetit!

### Region 10 Airstream Clubs

[Alberta/Saskatchewan Club #120](#)

[British Colombia Airstream Club #121](#)

[Idaho Airstream Club #035](#)

[Montana Airstream Club #061](#)

[NW Inland Airstream Club #179](#)

[Oregon Airstream Club # 090](#)

[Washington Airstream Club #112](#)

### Region 10 Club/Unit Presidents

Jane Goudie	<a href="mailto:goudiejane@gmail.com">goudiejane@gmail.com</a>
John Millard	<a href="mailto:millard12581@gmail.com">millard12581@gmail.com</a>
Calvin Huit	<a href="mailto:Calvin.huit@huit.us">Calvin.huit@huit.us</a>
Sue Smith	<a href="mailto:suzies_myth@hotmail.com">suzies_myth@hotmail.com</a>
Pam Mann	<a href="mailto:haroldpam@gmail.com">haroldpam@gmail.com</a>
Russ Lea	<a href="mailto:russlea1119@gmail.com">russlea1119@gmail.com</a>
Chris Wagner	<a href="mailto:cactusw@msn.com">cactusw@msn.com</a>
Diane Carpenter	<a href="mailto:dianecarpenter541@yahoo.com">dianecarpenter541@yahoo.com</a>

### Upcoming Region 10 National Rallies

Potlatch Reunion Rally, Washington Land Yacht Harbor, August 1-6, 2023 ([Registration Information](#))

Pendleton Round-Up, Pendleton OR, September 11-17, 2023 ([Registration Information](#))

Sun Valley Jazz and Music Festival, Sun Valley, Idaho, October 17 -22 2023 ([Registration Information](#))

If you made it this far, thank you for reading!