

NOVA

Spring Can Opener Rally

April 25-28, 2024

Exterior Lighting

- Illuminate all the exterior lights and confirm the proper operation. Look for partially illuminated marker light segments which have been noted to have a high failure rate (not functioning LED segments).
- The exterior lights can be illuminated by jumping between the top two terminals on the 7-pin (near the molded keyway on the 7-pin connector).
- Check the brake and turn functions while connected to the tow-vehicle.
- Confirm the function of the exterior door light or “scare light”

Exterior Surface Finish Maintenance

- Do not wash the exterior in hot sun. It is best to perform this procedure in the shade, early morning, or late evening hours to minimize water spots from forming.
- Wash and dry the roof, and entire exterior surface. DO NOT use a hard bristle brush – wash with a soft wash mitt or microfiber wand only in the direction of the Aluminum grain (horizontal on the sides/vertical on the end caps)
- Open the front glass protection shields (commonly called sunglasses). Obtain help from a friend to prevent the shields from over traveling in the open position and denting the front skin. Clean the window and the interior side of the shield. Dry the interior surface and reattach the quarter-turn fasteners to secure the shields in place.
- Dry exterior surfaces with an a old bath towel
- Wax the exterior surface with a wax or polish of your choice
 - Airstream recommends Walbernize RV Super Seal on clear-coated Airstreams
 - Airstream suggests using Rejex on front surfaces to facilitate bug debris accumulated during travel during
 - An automotive polish can be used on the white painted roof to facilitate cleaning and resistance to acid rain. NuFinish is an inexpensive polish that has received high test ratings fir durability

Exterior Lubrication

- Lubricate the exterior door hinges while opening and closing the door. Failure to keep these critical components lubricated could result in the pin seizing and wearing the hinge. This is a costly repair to replace these parts.
- Lubricate the door lock and latch mechanism with silicone based lubricant. The lock can also be lubricated with dry graphite (which tends to be messy). DO NOT use WD40 which contains naphtha and perfume. WD40 will remove the protective wax from your lock mechanism. This will cause subsequent permanent damage to the internal components.
- Lubricate all the hinge points on the folding steps. Boeshield T-9 has been recommend for this application.
- Lubricate the jack screws of the stabilizer jacks (x4). Operate the jacks fully to disperse the lubricant.
- Lubricate the tongue jack shaft with lithium or chassis grease

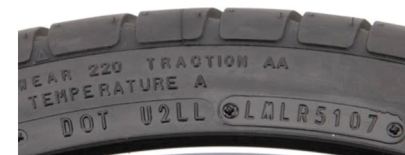
Tire & Running Gear Maintenance

- Rotate Tires Annually. Check the tire tread depth and note the information for each tire in your log book. Tires should never be used with less than 2/32 tread depth. Safety experts have noted server hydroplaning can occur with tread depths less than 4/32.
- Confirm brake operation/bearing condition
 - Ideally remove wheel/drum to inspect brake pads
 - Inspect magnet pad condition (drum brakes)
 - Clean drum brake area with brake cleaner
- Check Lug Nut Wheel Torque
 - 110 ft-lb AL
 - 100ft-lb Steel
- Check Tire Pressure (including spare wheel)
- Confirm tire age from Julian date on tire. Tire Engineers recommend retiring tires after 5 years of use
- Remove and confirm spare tire carrier operation. It is best to learn this operation while in a safe environment in case you need to use it in the road.
- NEVER use Armor all on the tire surfaces. This will cause sever deterioration of the rubber resulting in surface cracking
- Check and lubricate the emergency electric brake switch. It is best to do this at home with the ability to replace the switch if it breaks. Best practice is to carry a spare switch

Tires Manufactured Since 2000

Since 2000, the week and year the tire was produced has been provided by the **last four digits** of the Tire Identification Number with the **2 digits** being used to identify the week immediately preceding the **2 digits** used to identify the year.

Example of a tire manufactured since 2000 with the current Tire Identification Number format:



In the example above:

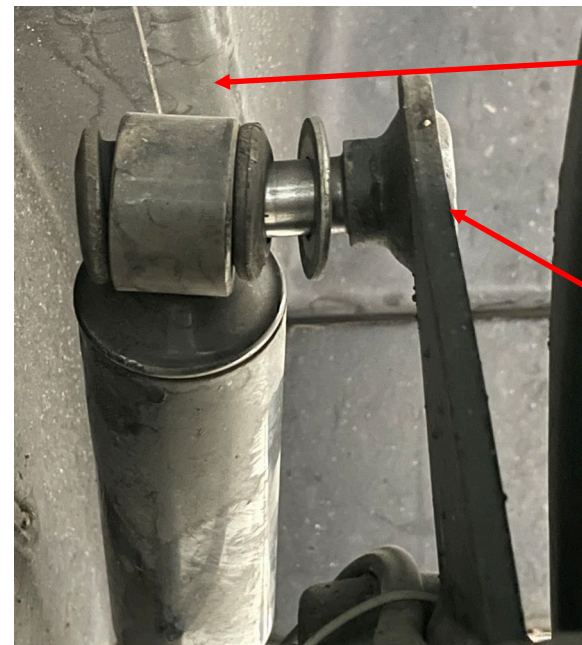
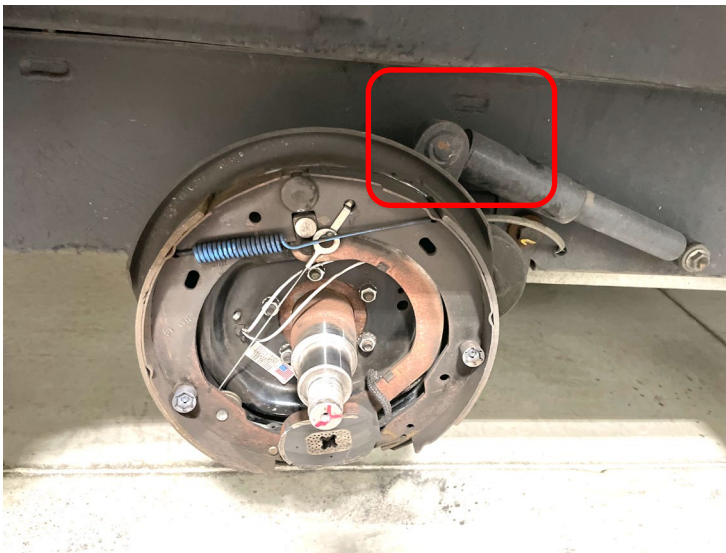
DOT U2LL LMLR 5107

DOT U2LL LMLR 5107 Manufactured during the 51st week of the year

DOT U2LL LMLR 5107 Manufactured during 2007

Axle Shock Absorber Maintenance

- While checking brake friction and bearings, confirm shock absorber integrity and presence of oil leakage
- Check Torque on Axle Shock Absorber Mounting Bolts. Particularly on RH or Curb Side upper mounts. These have been known to work loose and/or fall off.



Missing Nut

Axle Arm w/stud

Tow Vehicle Hitch Maintenances

- Visually check the integrity of the tow vehicle platform hitch hardware. Look for weld integrity and cracks in the mounting flanges, tubular structure, and welds.
- Torque Check the hitch mounting nuts and ball mount.
- 2 5/16 hitch ball mounting nut: 1 7/8 socket @ 430ft-lb torque spec
- Equalizer Shank Bolts 1 1/8 socket @320ft-lbs torque

Awnings

- Pull out and clean all awning material to remove any tree sap/bug/dirt accumulation
- Lubricate the roller spring end with silicone spray while operating the awning in and out (bring a helper)
- Lubricate the arms and lock pins on manual awnings
Main Awning
- Lubricate the gas damper arms (collapsing support arms) on power awning models
- Lubricate the jack screw through the small lube hole on power awning models
- Confirm the function of the exterior awning light (if equipped).

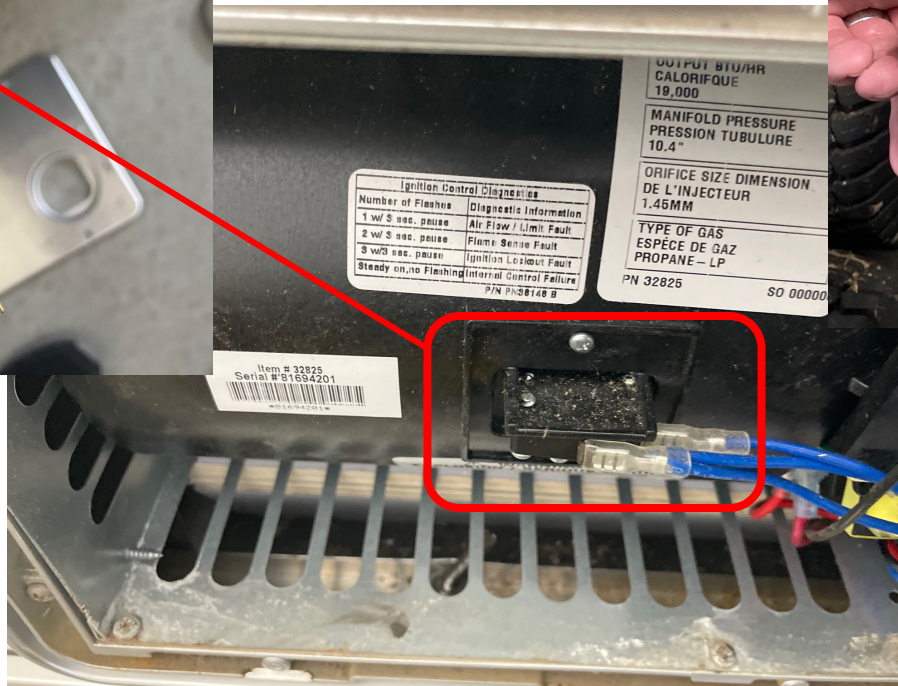
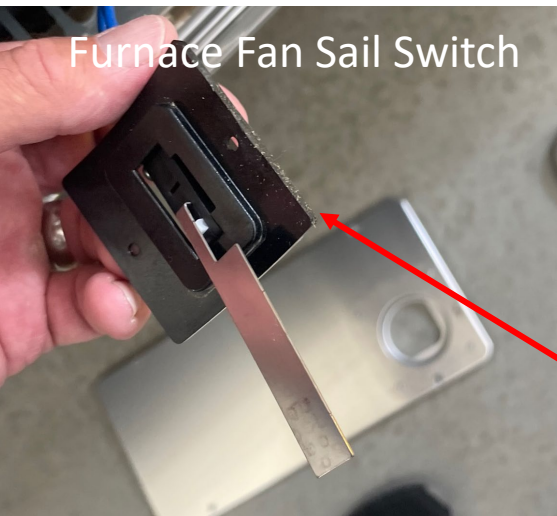
Air Conditioner Clean-up

- Remove the exterior Air conditioner Cover by removing the 4 Philips head screws on the cover.
- Pull the cover up and place it in a safe place (the ground is best).
- Inspect and remove any contaminants around the heat exchanger and the fan housing.
- DO NOT touch the heat exchanger Aluminum fin surfaces.
- Clean the heat exchanger with a small office nozzle attached to a garden hose. Spray the coil surfaces until the water is visibly clear.
- A commercial AC evaporator cleaner can be sprayed to the coil to facilitate the removal of any dirt or pollen. Be careful, as these cleaners can damage or mark the finish on the roof or side surfaces. If used, it is best to flush all exterior surfaces immediately. NEVER to this in direct sunlight.
- On ducted AC units, Remove the interior air filters from the screen retainer (4 small screws). Remove and wash the foam filter in warm water and dish soap. Dry, and reinstall.
- The 2023 Airstreams with ducted AC are built with an housing that contains an internal filter. Refer to your owners manual for instructions on removal and cleaning of those filters.
- Clean the AC drain tube located between the street side tires (on dual axle models). Blow compressed air into the tube, or alternately insert fishing line into the tube to clear any debris



Furnace Cleaning and Inspection

- Remove the exterior cover on the furnace
- Remove the exterior exhaust vent and pull the tube clear of the furnace.
- Inspect and clean the fan switch for accumulation of dust or lint
- Inspect and clean the interior combustion area to remove any foreign objects.



Sanitize Fresh Water Tank

- Fill and flush the fresh water tank
- Re-fill and add $\frac{1}{4}$ cup household bleach for every 16 gallons of water. For a 40 gallon system, this equates to approximately 10 oz of bleach. Add the bleach to tank and refill with water.
- Make sure the hot water heater is shut off-before draining to prevent overheating.
- Let the bleach solution soak in the tank. When ready to drain, turn on the water pump, and let the solution run through every facet until you smell bleach. This is especially advantageous for the indoor and outdoor shower hose
- Once the soak period is finished, refill and drain the tank to flush out the bleach solution Run the fresh water through all the facets until you no longer smell bleach.

Flush and Clean the Hot Water Tank

- Make sure the hot water heater is turned off before draining.
- Remove the drain plug on the hot water tank. While the plug is removed, insert a water heater flush nozzle into the drain plug and move the flush nozzle in and out while rotating. Flush until you see clear water without calcium drain out of the heater.
- Open the pressure relief safety valve for the next procedure.
- Attach the PVC adapter fitting and fill kit (see attached parts list). Insert a funnel into the PVC riser pipe and fill the water heater with vinegar. Leave the PVC pipe attached during the soak.
- Turn the water heater on until you see vinegar burping out of the pressure valve. Shut the water heater off and let it soak overnight (or as long as you can manage – longer is better depending on the calcium build-up).
- Remove the PVC fill kit and drain the vinegar out of the tank. Flush the water heater tank using the water heater flush wand.

Water Heater Vinegar Drain Kit

- Buy a 4ft length of $\frac{3}{4}$ inch PVC water pipe
- Buy a $\frac{3}{4}$ PVC Elbow
- Buy a $\frac{1}{2}$ NPT to $\frac{3}{4}$ PVC pipe adapter.
- Cut the $\frac{3}{4}$ pipe into approximately 1 ft length to attach an extension between the $\frac{3}{4}$ - $\frac{1}{2}$ NPT adapter
- Attach the 90 Elbow to the short pipe section
- Do not glue the connections – simply press together
- Attach a vertical riser to the other end of the embow to serve as a fill point.
- Insert a small funnel into the top of the tube to pour vinegar into the water heater
- Purchase a Water Heater Flush Wand Be careful if you use the Camco wand, there have been cases of the plastic wand coming loose and becoming lodged inside the water heater. If you use this, apply electrical tape around the joint to ensure it does not become detached
- https://www.amazon.com/GaeaAuto-Flusher-Remove-Sediment-Cleaning/dp/B09SB12WPP/ref=sr_1_1_sspa?keywords=rv%2Bwater%2Bheater%2Bflush%2Bwand&qid=1673975375&sr=8-1-spons&spLa=ZW5jcnlwdGVkUXVhbGlmaWVyPUEyUzVNNzRHTzRLM1A5JmVuY3J5cHRIZElkPUeWMDAyOTE1MzNIM1g2V1g0NDhQWCZlbnNyeXB0ZWRBZEIkPUeWMDM5NDYyMik3SzFFVkfOWDNQWSZ3aWRnZXROYW1IPXNwX2F0ZiZhY3Rpb249Y2xpY2tSZWRpcmVjdCZkb05vdExvZ0NsaWNrPXRydWU&th=1
- https://www.amazon.com/Heater-Cleanses-Removes-Sediment-Extends/dp/B0BGH96J28/ref=sr_1_2_sspa?keywords=rv%2Bwater%2Bheater%2Bflush%2Bwand&qid=1673975375&sr=8-2-spons&spLa=ZW5jcnlwdGVkUXVhbGlmaWVyPUEyUzVNNzRHTzRLM1A5JmVuY3J5cHRIZElkPUeWMDAyOTE1MzNIM1g2V1g0NDhQWCZlbnNyeXB0ZWRBZEIkPUeWMDM5NDYyMik3SzFFVkfOWDNQWSZ3aWRnZXROYW1IPXNwX2F0ZiZhY3Rpb249Y2xpY2tSZWRpcmVjdCZkb05vdExvZ0NsaWNrPXRydWU&th=1

AIRSTREAM

Exterior Care Guide



4 oz Can
PN: 90004W

12 oz Can
PN: 90012W

Boeshield T-9

Boeshield T-9 was developed by The Boeing Co. for lubrication and protection of aircraft components. Boeshield T-9 is a combination of solvents, lubrications, and waxes designed for penetration, moisture displacement, lubrication and protection. It dries to a thin waxy film that clings to metal for months

Clean-Up: Using a soft rag, clean up with mineral spirits or a degreaser. Always wipe in the direction of the grain.

For use on any metal that rusts or corrodes.
Also treats electrical connections

Reapply as needed.



6 oz Can
PN: 90101W

16 oz Can
PN: 30102W

CorrosionX

CorrosionX is a multi-functional product that stops and prevents rust or corrosion on any metal surface, it is a superior lubricant and an unbelievable penetrant. CorrosionX is specially designed to displace moisture, stop rust and corrosion and provide protection against rust and corrosion. It is exceptional in its ability to prevent electrolysis between dissimilar metals.

Clean-Up: Using a soft rag, clean up with mineral spirits or a degreaser. Always wipe in the direction of the grain.

For use on any metal that rusts or corrodes.
Also treats electrical connections

Reapply as needed.

AIRSTREAM

Exterior Care Guide



12 oz Bottle
PN: 91001W

Rejex

Rejex is designed to give an ultra-slick, high gloss polymer finish that seals/protects painted surfaces, glass, metal, gel coat and acrylic.

Reapply every 6 months.

Can be used on entire vehicle - even on the wheels and glass.



32 oz Bottle
PN: 28433W

Walbernize RV Super Seal

RV Super Seal contains a combination of cleaning, polishing, and glazing ingredients. It provides easy cleaning and polishing action while simultaneously depositing a deeply reflective, water-proof, glaze finish. Quickly and easily removes traffic film and spots of road oil and tar. It can be used on chrome and glass.

Reapply every 6 months.

Safe for all types of finishes



1/2 Gallon
PN: 28422W

Walbernize Cleaner Polish and Glaze

Walbernize contains a combination of cleaning, polishing, and glazing ingredients. It provides easy cleaning and polishing action while simultaneously depositing a deeply reflective, glass hard, water-proof, glaze finish. Quickly and easily removes oxidized pigment, traffic film and spots of road oil or tar.

Reapply every 6 months.

Not recommended for clear-coat finishes.