

The Hillbilly



Publication of Watchung NJ Airstream Club

www.airstreamclub.org/watchung-nj July 2024

President's Message



Happy summer! Besides thinking about how to keep cool, it's also that time of the year when the push begins for 2025 volunteers. The Rally/Luncheon Schedule was published in last month's Hillbilly. Hosts for luncheons and rallies are needed. Contact Laura Riley (2nd Vice President) with your month of choice. Venues are not mandatory at this point, however if you have a campground in mind you might want to talk to the staff to find out how they go about blocking out sites for a group.

Our slate of officers for next year also needs a few names. The upcoming rallies would be a great place to ask about these offices.

Those of you who have been to our rallies, know we love to talk about Airstreams and Watchung!

- President- Leslie DeHerde #6590
- 1st VP- Laura Riley #28240
- 2nd VP- THIS COULD BE YOU!
- Corresponding Secretary- Frank DeHerde #6590
- Recording Secretary- Rich Short #1512
- Treasurer- Lois Wagner #16003
- Directors: Cathy McCarthy #12686
Rebecca Glick #7585
Pat Attanasio #22620
THIS COULD BE YOU!

In talking to newer Watchung members, I have heard how nice it is that we keep our members up to date on club news via our monthly newsletter (The Hillbilly), Member Handbook, and group emails. Please help keep our club active and vibrant by volunteering today.

We are looking forward to our upcoming rallies. There will be a meeting at the August Rally. Our newest addition to the rally schedule is October 24-27 at White Oak Campground in Quarryville, PA. Still time to sign up, then let Rich Short know. Our Annual Business Meeting will take place at this time.

Lea #2256

Do not forget to support our sponsor



Announcements

Sunshine Report

For the month of June we sent one "Thank You" card to Frank DeHerde for helping out a fellow Airstreamer.

Would you like to have a card sent to another club member to wish them well or mark a milestone? Please send a note to Linda Kiesel our Sunshine Director at lkiesel@ptd.net.



How to Find, Sign Up and Pay for an ACI Event Online

- Log on to <https://airstreamclub.org/>
- Click on the EVENTS tab
- A map of the US will be displayed containing pins for all the events for all the Airstream clubs. Just above the map on the right side of the screen is the **Clubs** box. Click on the down arrow to display the list of clubs then scroll down to **Watchung NJ Club**. Clicking on this will cause the map to display only Watchung club events.
- Find the event you wish to sign up for and click on the associated pin.
- A text box giving a brief description of the event will be displayed. Click on the arrow in the orange box that says **More**.
- A new page will be displayed. If a registration form has been created for the event this page will give you two options: online registration or mail-in registration using a download of the form. The online form allows payment via PayPal. If you prefer to pay via check download and print the form, which includes payment instructions. If there is no registration form available yet one will be at a later date.

July Birthdays

Calvin Bacon
Barbara Bacon
Thomas Noble
Roger Kriz
Lynn Brink
Leslie DeHerde



2024-5 Watchung Airstream Club Luncheon and Rally Schedule

DATE	WHAT/WHEN	HOSTS	COHOSTS	VENUE
July 2024	Club Rally/July 19-21	Chris and Joanne Forster	Lois Wagner Derek Conley	Mt. Greylock Campsite Park, Lanesborough, MA
August 2024	Club Rally and Meetings/August 16-18	George and Linda Kiesel	Jay and Cathy McCarthy	Lake Glory Campground 96 Eisenhower Rd., Catawissa, PA
September 2024	No Dilly-dally Rally/ Sep 6-8	Meg and Laura Riley	Mark and Angie Ratliff	Lums Pond State Park, Delaware
October 2024	International Rally/October 5-10	WBCCI	NA	MO State Fairgrounds, Sedalia, MO
New! October 2024	Club Rally and Annual Business Meeting/Oct 24-27	Rich and Kathi Short		White Oak Campground, Quarryville, PA
November 2024	Luncheon/TBD	Michael Koczwara and Barbara Taylor		TBD
December 2024	Luncheon/Officer Installation/TBD	Leslie DeHerde	Lea Plant	TBD
January 2025	Luncheon			
February 2025	Luncheon			
February 2025	Special Event/Oct 14-15	Contact Lea Plant		Colonial Airstream, Millstone Twp.
March 2025	Luncheon			Knights of Columbus 130 Main St. Woodbridge NJ
April 2025	Club Rally/Meetings			
May 2025	Region 2 Rally			
June 2025	Club Rally/			
July 2025	Club Rally/			
August 2025	International Aug 23-28	WBCCI	N/A	York, PA
September 2025	Club Rally/			
October 2025	Club Rally/Annual Business Meetings			
November 2025	Luncheon/			
December 2025	Installation Luncheon	Laura/Meg Riley	Leslie/ Frank DeHerde	TBA

July Rally Information

Mt. Greylock Campsite Park
15 Scott Road, Lanesborough MA 01237
July 19-21, 2024

Hosts: Joanne and Chris Forster. Cohosts: Lois Wagner and Derek Conley

You can now make your reservations for July's rally at this link: [Mt Greylock Campsite Park Reservations](#).

The reservations are for Friday and Saturday night, July 19 and July 20. **If you would like to go earlier and/or stay later, please call the campground (413-447-9419) rather than using the link, and mention you are with the Watchung Airstream group.** So far we have 14 rigs signed up. We have sites 30 through 38B reserved (see map on website). Your hosts are in sites 31 and 35, which is where we will have our group tent set up.

Planned Schedule (subject to change)

Friday, July 19

9:30 AM – Hiking, biking, or other activity for those that arrive early (see [Area Activities](#) below).

2:00 – 9:00 PM – Campground check-in time.

5:30 PM – Happy Hour/Dinner*: Please bring hearty appetizer to share. Also please **bring your own chair, plates, utensils, and beverage**—at host sites (31 + 35).

7:30 PM – Campfire (weather permitting) and Game.

Saturday, July 20

8:30 AM – Coffee, tea, oatmeal with fixings, crumb cake*. **Please bring your own bowl, plate, utensils, and coffee mug**—at host sites (31 + 35).

10:00 AM – Optional group activity; choice of 3. (see Area Activities below for more info)

1. Drive/Hike Mount Greylock:

<https://www.mass.gov/locations/mount-greylock-state-reservation>

2. Mass MoCA: <https://massmoca.org/>

3. Hancock Shaker Village: <https://hancockshakervillage.org/>

Lunch – On your own.

4:00 PM – Happy Hour. Bring chair and beverage—at host sites (31 +35).

5:00 PM – Dinner catered by Zucchini's.* Please bring cash for charity raffle (St Jude's Childrens Hospital). **Please bring your own chair, plate, utensils, and beverage**—at host sites (31 +35).

After dinner group activity – Liquid Courage, Classic Rock Band (till 9:00 PM) provided by Mount Greylock Campsite Park; **Bring your own beverage and lawn chair.**

9:00 PM – Campfire—at host sites (31 +35) weather permitting.

Sunday, July 21

8:30 AM – Coffee, tea, yogurt, fruit—at host sites (31 +35).

12:00 PM – Check out time for those departing.

*Please, no pets during meals.

Note: For this rally we are trying something new. Rather than attempt to guess the rally budget in advance and ask for payment up front, the per-person fee that covers our meals and sundries (the campground fee is paid when you make your reservation) will be calculated and collected Sunday morning after we have added up our actual expenses. This method is used by other Airstream clubs to eliminate overpayment and the no-show issue. Based on our past hosting experience we anticipate the fee will be \$20 or less per person. Payment can be made by check, cash, or Zelle.

Mt. Greylock Campsite Park Area Activities

[approximate driving time, miles from campground]

Mount Greylock Hike: Mount Greylock has a variety of self-guided and guided hikes, many include part of the Appalachian Trail; visit the Visitors Center at Mount Greylock State Reservation for maps and information. Dogs welcome.

<https://www.mass.gov/locations/mount-greylock-state-reservation> [7 min, 1.5 mile]

Mount Greylock Driving Tour/Hike: Auto Road at Mount Greylock State Reservation. *Mount Greylock's Hidden Treasures, A Driving Tour* Brochure is available at the Visitors Center – Allow 40 minutes to drive through the park, but there are several scenic views and short or long hikes along way for a longer outing; Dogs welcome. No entry fee, but \$2 fee to park at summit. **See website above.**

Bike: Ashuwillticook Rail Trail: <https://www.mass.gov/locations/ashuwillticook-rail-trail>

[15 min, 5 miles to trail]

Bike or Kayak Rentals: Berkshire Outfitters (store is 300 yards from rail trail):

<https://www.berkshireoutfitters.com/> [20 min, 11 miles]

Art Museums/History:

Mass MoCA: Modern contemporary art; vast galleries with unusual art. Adults \$25; seniors \$22.

Only service dogs allowed. <https://massmoca.org/> [31 min, 19 miles]

Sterling and Francine Clark Art Institute. Masterpieces of European and American painting, sculpture, works on paper, and decorative arts from the Renaissance to the early twentieth century. www.clarkart.edu [20 min, 13 miles]

Hancock Shaker Village: a living history museum with animals. Tours available or self guided.

Adults \$20, Seniors \$18. Only service dogs allowed. <https://hancockshakervillage.org/>

[26 min, 13 miles]

Norman Rockwell Museum: <https://www.nrm.org/> [40 min, 23 miles]

Bennington Battle Monument: <http://www.benningtonbattlemonument.com/>

[40 min, 27 miles]

Bennington Museum: <https://benningtonmuseum.org/> [40 min, 27 miles]

Music: Tanglewood (various concerts): <https://www.bso.org/tanglewood> [31 min, 16 miles]

Dance: Jacob's Pillow (Social Tango Project and other events)

<https://www.jacobspillow.org/festival/ticketed-performances/> [46 min, 27 miles]

Relax/swim/fish at campsite: <https://www.mtgreylockcampsitepark.com/activities-and-events>

See campground website for more ideas, including wineries, breweries:

<https://www.mtgreylockcampsitepark.com/nearby-attractionsdd>

August Rally Information

August at Lake Glory Campground—Buddy Rally*

96 Eisenhower Rd. Catawissa PA 17820

570-356-7329

*Buddy Rally allows for Non Airstream members and guests to attend.

Please let George Kiesel know what site you have booked so he can keep a tally of who is where: gkiesel861@gmail.com. George & Linda Kiesel 908-930-0550 Jay and Cathy McCarthy 215-833-8647

When: August 16th to August 18th, 2024. Hosted by Linda and George Kiesel, cohost Jay and Cathy McCarthy. Come join us for a relaxing fun-filled weekend. The campground runs a no-cost shuttle to Knoebels amusement park. Other attractions in the area include the Pioneer Tunnel Coal Mine tour in Ashland PA, Geyser Big Mine Run, and several covered bridges in the area.

Friday: arrivals.

3 PM: Campground check-in time.

5PM: Happy hour.

6PM: Pizza and salad dinner 6pm. Bring your own plates and utensils to all meals.

Saturday:

8:30-9:30: Breakfast. Blueberry or apple pancakes, sausage, coffee, juice.

Rest of the day: On your own.

5 PM: Happy hour.

6 PM: Dinner. Potluck Supper. Check Box on the form below to indicate what dish you are bringing.

7:30 PM: Re-Gifting Bingo, bring at least 2 affordable gifts to play. Details to follow.

Campfire weather permitting, After dinner: **St.Jude Childrens Hospital charity raffle.**

Sunday: Departures

8:30-9:30: Continental Breakfast

Executive Board mtg. at 9:30 and General Mtg. at 10am.

2:00 PM: Check-out time

Please note that you are asked not to bring your pet to the pavilion during happy hour or mealtimes.

Name _____ Email _____ Cell _____ BRN _____

Rally Fee per adult \$15.00 x number of adults = \$_____ .

Make Checks Payable to; Watchung NJ Airstream Club or pay [online](#)

Mail Checks to Lois Wagner 29 Colony Court New Providence NJ 07974

I/We will bring (please check one): Main Entrée___ Side___ Salad___ Dessert___-

Directions to Lake Glory Campground

Please note the campground website states DO NOT FOLLOW GPS, as it will bring you on roads with height restrictions. Please avoid McIntyre and Esther Furnace road due to a covered bridge.

Directions from Knoebel's website:

Lake Glory Campground Entrance — 40°54' 08.80" N 76 ° 2731.73"W

From 1-80 West

For trailers we suggest taking the Buckhorn exit 232 Route 42 South to Catawissa. Cross the bridge and watch for Route 487 south to bear right up an incline. Stay on Route 487 approx. 4 miles, turn left onto Ashton Hollow Rd then Left onto Hemlock Road, then left again onto Eisenhower Road. The campground will be on your left.

From 1-80 East

Take Danville Exit 224 to PA Route 54 east through Danville. PA 54 turns Left to Elysburg. Turn left onto PA 487 North at the Light. Turn Right onto Ashton Hollow Road, then Left onto Hemlock Road then Left again onto Eisenhower Rd. The campground will be on your left,

From 1-81 South

Near Hazleton, Take the 1-80 and 1-81 Junction and follow Route 80 West. Take the Buckhorn exit 232 Route 42 South to Catawissa. Cross the bridge and watch for Route 487 south to bear right up an incline. Stay on Route 487 approx. 4 miles, turn Left onto Ashton Hollow Rd then Left onto Hemlock Road, then Left again onto Eisenhower Road. The campground will be on your left.

From 1-81 North

Take Minersville Rd exit 116. Turn left onto Route 91 west to PA Route 54 west. Turn right onto PA Route 487 North at the lights Turn right onto Ashton Hollow rd., then left onto Hemlock Road, then left again onto Eisenhower Road. The campground will be on your left.

September Rally Information

The No Dilly-dally Rally

Lums Pond State Park
1068 Howell School Road
Bear, Delaware 19701
302-368-6989

When: September 6-8, 2024

Hosts: Meg and Laura Riley

Co-hosts: Angie and Mark Ratliff

We are trying to get all the club in sites 45 thru 62 if possible and there are currently 41 sites open. If you can't get close to sites 45 & 46 no worries! Book asap for best selection!

Use this link to book and view the campground site map:

<https://delawarestateparks.reserveamerica.com/camping/lums-pond-state-park/r/campgroundDetails.do?contractCode=DE&parkId=360119>

Once you have your site, please email Meg Riley at vespameg@yahoo.com with your site number and date of arrival. Don't dilly dally or you'll miss the rally!

The hosts and co-hosts will be arriving a day earlier, September 5, so please feel free to join them.



Lums Pond State Park. Photo: Delaware State Parks

October Rally Information



<https://www.whiteoakcampground.com/>

We have 18 sites reserved at White Oak Campground in Quarryville, PA. OCT. 24-27, 2024 for our October Rally. White Oak Campground offers full hookup sites and a large rec hall for our use. Located in the beautiful Amish countryside of Lancaster County, there will be plenty to do exploring the area. Come on out and support your Club.

We have these sites on hold ONLY UNTIL JUNE 30 and we will need to release any unbooked sites after that date. It doesn't mean you won't get a site after that date but with no guarantee they will be with the group. The Campground is offering us a 12% group discount and has a reasonable cancellation policy if your plans change. So don't wait or procrastinate....book today!

Your Group Code: Airstream-24 Expires: Jun 30, 2024

Our Group Reservation is for four (4) nights...Thursday thru Sunday, October 24-27. If you want to come early, stay later, or less than the four (4) night reservation please call the Campground at (717) 687-6207 and book your site directly.

More information and Rally details will follow over the Summer. Hope to see you there!

Thanks!

Rich Short
1512
609-618-0355

Spring Trip West part 2

Text and photos Lois Wagner/Derek Conley

Thirteen days after we left New Jersey we arrived in Sammamish, Washington, a suburban town just east of Seattle, the first of two week-long stops on the West coast to visit old friends. In researching where to stay we found very few campgrounds anywhere near either Seattle or our next stop, Portland. Because we were visiting in early spring, we were fortunate to score reservations at campgrounds close to both about a month in advance. May and June were booked solid by the end of February. Full hookups in both campgrounds were \$75 for March, higher in the summer months.

Although both cities are famous for rain from October through April, we lucked out; the only rain we encountered in our week visiting Seattle came as we drove over Snoqualmie pass on our way to



Samamish. After that we had sun every day. Our hosts marveled at our good fortune but chalked it up to Seattle's rapidly changing weather patterns. We were surprised to learn that it is now not uncommon for summertime temperatures to hit 100 degrees, and, astonishingly in the land of rain, water rationing has been necessary for the past few years during July and August.

Taking advantage of our climatological good fortune we spent part of each day touring Seattle and the surrounding area, hitting such famous tourist attractions as [Pike Place Market](#) on the waterfront and [Snoqualmie Falls](#), hard by the pass of the same name that conveys I-90 over the mountains to Seattle. At the Pike Place fish market we chanced upon an exhibition of [fish-throwing](#), a tourist [favorite](#). At the falls we had brunch at the Salish Lodge and Spa, which sits next to the waterfall. The lodge was the principal setting for the 90's television series [Twin Peaks](#). We also visited several local coffee roasters, accumulating several pounds of the good stuff to carry home with us.

The week sped by and before we knew it, we were headed to Portland, less than four hours to the south. Although we had no rain during our Seattle stay, the mountains to the east (the Cascades) and west (the Olympics) were cloaked in clouds the entire time. On the way out of Seattle we had our one and only glimpse, from I-5, of [Mount Rainier](#), the hulking volcano that looms over Seattle. Compared to the relatively sleek Mount Hood that is just east of Portland, Rainier's massive bulk makes Hood look almost petite, elegant.



Snoqualmie Falls with Salish Lodge upper left. The intrepid can hike down to the bottom of the falls.



Beach at Arch Cape Oregon. Sand near the water, polished rocks above the tide line.

Upon reaching Portland we parked our trailer at a campground in the suburb of Gresham and spent much of the week with friends at their cottage on the Pacific coast at Arch Cape, Oregon, a hamlet of several dozen beach cottages and houses that line the shore just south of Hug Point State Park, about four miles south of the town of Cannon Beach.

Once again, we were blessed with unusually warm and sunny weather for April, enabling us to explore the beaches and towns with no rain gear or umbrellas and even sit on the beach and soak up the sun, almost unheard of that time of year.

The northern hundred and fifty miles or so of the Oregon shoreline was formed by lava flows between 20 and 16 million years ago that originated in eastern Oregon and Washington, over three hundred miles to the east. Today the shoreline is characterized by long curved beaches of sand and polished black rocks nestled between hard volcanic headlands that protrude out into the Pacific. The beaches are vast, at low tide perhaps two to three hundred yards deep on average. Although there were a couple of hundred people (and more than a few dogs) around us, the beaches still felt almost empty.



A view from the beach of Hug Point State Park, Oregon. Hug Point Falls is in the foreground, one of the sea caves in the background. The Pacific is just to the left



The Oregon shoreline at Indian Beach looking south from Ecola State Park to Cannon Beach beyond. Haystack rock is at far upper right. All the rocks are the eroded remains of lava flows from 350 miles to the east.



Hug Point Falls.

Nearly every stretch of beach has at least one fresh-water stream running into the ocean. Fall Creek, near our friends' cottage, fell gently over a seven-foot ledge of rock onto the sand at Hug Point Falls. Hug Point itself, just a hundred yards north, is a volcanic headland that separates Arch Beach from Cannon Beach. Even at low tide the water at the point is ten



Forty-foot log jammed deep in a seaside cave at Hug Point.

feet deep, making it impossible to walk around. To get around this obstacle, in about 1906 some enterprising citizens used pickaxes to chop a 200-foot path the width of a car around the base of the cliff about eight feet above mean sea level to connect the two communities. A framed photograph in our friends' cottage dated 1910 shows a car, likely a Model T Ford, on the path headed for Cannon Beach. This was thirty years before the coast road, route 101, existed. The path is still there, and we took a photo of the path from the same spot as the one taken in 1910. Except for the absence of the Model T, the two photos look identical.

We walked from the cottage to Hug Point State Park to explore some of the wave-dug caves that dot the base of the cliffs. One had an entire tree trunk jammed deep inside by a storm. At high tide, the cave is filled with seawater, and spectacular red algae grow on the cave ceiling.



Sea cave at Hug Point with red algae growing on the ceiling. The cave is underwater at high tide.



The hand-hewn car path looking North towards Cannon Beach. It is just wide enough for Henry Ford's Model T.



The Hug Point car path looking south.

cocktail bars and expensive small hotel/resorts. It's all a bit rich for our budget but if we had brought the trailer, we could have stayed at either of two campgrounds right in town which looked well-kept and were reasonably priced in the \$50-60 range. Ten miles to the north the larger town of Seaside is more oriented to families on a budget. It has at least three campgrounds in the town, which is two more than Portland and three more than Seattle.



As you might guess from all the lava formations and the nearby volcanoes (Mount St. Helens is 100 miles to the East) the Northwest coast is what is called "seismically active", meaning it can have lots of earthquakes. Big earthquakes (and of course volcanic eruptions). In 1964 (yesterday, in the geologic time frame) an offshore earthquake generated a tsunami that destroyed much of the town of Cannon Beach. Today as you drive around Cannon Beach you'll

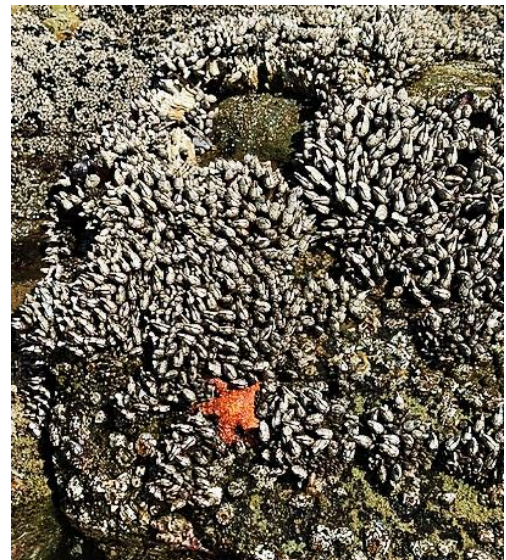
encounter bright blue stripes painted across some of the roads. Beside each stripe is a large blue and white road sign the says either "entering tsunami hazard zone" or "leaving tsunami hazard zone", and the fire department maintains a network of sirens connected to geologic sensors that sound when an offshore earthquake that might generate a tsunami strikes. Among the locals nobody seems to give it a second thought; it's just part of life in a spectacularly beautiful place.

At the end of our week, we reluctantly left "our" Arch Cape cottage, picked up our trailer in Portland, and headed East to start our return trip home.

Next time: Columbia River Gorge and the Palouse, Snake River and Lewiston, Idaho, Montana, North and South Dakota, Nebraska and Iowa.

Today the path and the low parts of the point are carpeted with countless millions of mussels and barnacles as well as at least three or four different species of sea stars (which eat the mussels) and sea anemones.

Four miles to the north lies the well-known town of [Cannon Beach](#) with its famous landmark, [Haystack Rock](#). It's a pretty, toney place with lots of upscale gift shops, fine dining restaurants, coffee roasters,



*Every inch of Hug Point that is covered by water anytime during the tide cycle, including the car path, is covered by barnacles and mussels. At least three species of sea stars are there too, including this ochre sea star, *Pisaster ochraceus*, which dines on barnacles and mussels. One of these can eat about eighty mussels a year and thus are disliked by foraging humans. We saw hundreds of sea stars all over Hug Point.*





Mount Hood in clouds, its top just visible, viewed from Portland. Compared to hulking Mount Rainer, Hood looks elegant, almost petite. It last erupted in 1782 and of all the volcanoes in the Cascade chain is considered the most likely to erupt next by the US Geological Survey.

Items for the newsletter?

Send them by the 20th of each month to: (dconley1810@gmail.com)

Interested in joining the Watchung NJ Airstream club?

Contact:

Membership: George Kiesel (gkiesel861@gmail.com)

President: Lea Plant (tenlea@aol.com)

FIVE RIVET DEALER
SINCE INCEPTION

AIRSTREAM FACTORY CERTIFIED SERVICE

- SOLAR UPGRADES
- ACCESSORIES INSTALL
- AIRSTREAM BODY REPAIR
- DE-WINTERIZATION & MORE

LITHIUM UPGRADES!

Colonial AIRSTREAM

FAMILY OWNED & OPERATED

595 NJ 33, MILLSTONE TWP, NJ 08535

11-TIME RV BUSINESS TOP 50 DEALER

CALL US TODAY! 800-265-9019
WWW.COLONIALAIRSTREAM.COM

HUGE INVENTORY!

AIRSTREAM TRAVEL TRAILERS
MASTER Sales
TO ANSWER ALL OF YOUR QUESTIONS

2024 Watchung Club Officers

President	Lea Plant
1 st Vice President	Leslie DeHerde
2 nd Vice President	Laura Riley
Correspondence Secretary	Lea Plant
Recording Secretary	Richard Short
Treasurer	Lois Wagner
Directors	Rebecca Glick
	Cathy McCarthy
	Kathi Short
	Stayla Elacqua

Other Club Roles

Membership	George Kiesel
Sunshine	Linda Kiesel
Web Master	Mark Ratliff
Directory	Chris Forster
Newsletter	Derek Conley
Quartermaster	Jason Pomerleau

