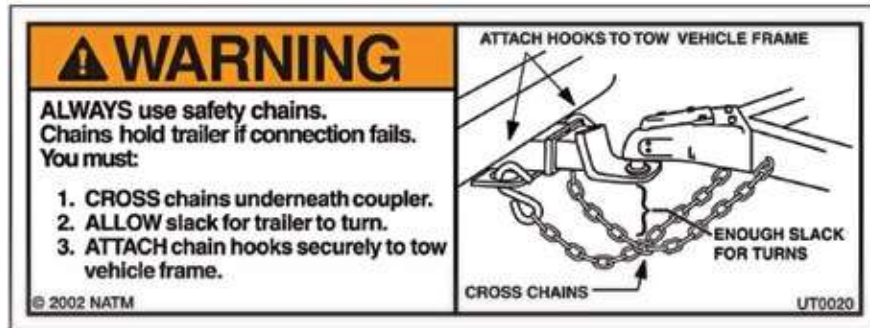


Check your safety chains

Trailer safety chains are used as a backup feature when towing a trailer to ensure that the trailer never detaches from the towing vehicle or hits the ground.

Most states require safety chains, and properly securing them can sometimes mean the difference between an uneventful trip and a runaway trailer. This is why it is so important to make sure that you attach the safety chains properly.



From Deco Art

Cross the chains before you attach them to your tow vehicle. They should hang a few inches below the tongue, not near to the ground.

In the event that your trailer comes off the hitch ball as you're moving, the crossed chains are meant to help cradle the trailer tongue until you can get stopped.

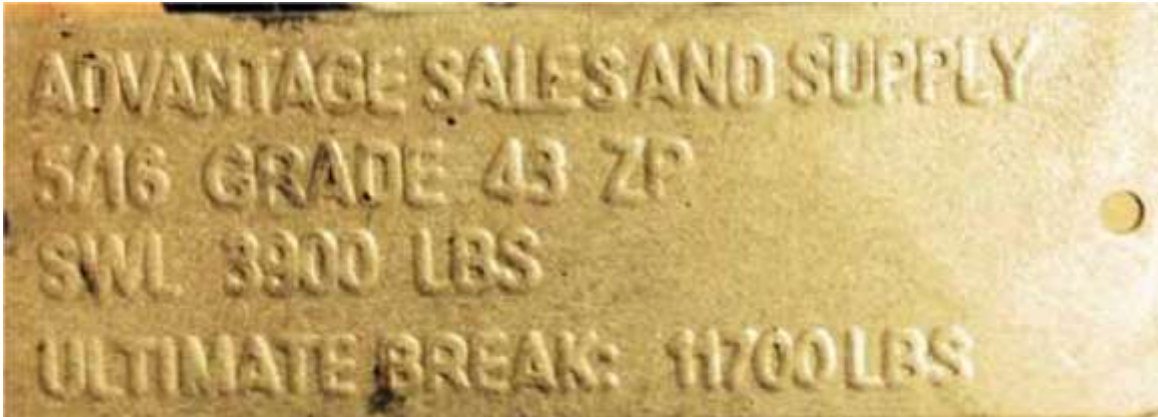
Make sure your chains are the correct length and attached properly.

- We have seen chains ripped off A-frame due to the hitch set-up. Some will require longer safety chains than OEM.
- If you add on to safety chains, they need to be equal to original chain load strength - the chain, the coupling link and the hook.



In need of some safety chains These chains all have been added on to but may only be as strong as the weakest link. Use proper rated chains, links and hooks.

Current chain tag with load ratings.



Load rating tag explained

- WLL (Working Load Limit) or SWL (Safe Working Load) is the load that a piece of chain can safely lift, suspend, or lower without fear of breaking.
- Per industry tables, the SWL of 5/16", Grade 43 chain is 3900 lbs.
- For 5/16", Grade 43 chain the Proof Load is 2 times the SWL or 7800 lbs.
- For 5/16", Grade 43 chain, the Ultimate Breaking Strength is 3 times the SWL or 11,700 lbs.
- So if a hitch comes off the ball and falls into properly applied safety chains, the two chains should safely support up to 7800 lbs. If the tow vehicle and trailer are attempting to pull apart, the two safety chains combined should not break before 23,400 lbs. of force is applied.
- If the chain is lengthened, the connector link and additional chain must be the equivalent of 5/16", Grade 43, or greater.