

## **Application of Acryl-R Seam Sealer**

Welcome to 2010! It is definitely a more optimistic picture for Airstream this year than it was at this time in 2009; we have seen an up swing in sales and have called employees back to meet that demand. Here is to 2010.

I have had inquires and read questions on the internet on the proper way to seal the seams on an Airstream trailer. People have varying opinions and use many different products to seal their trailer seams. Most sealants will do the job of sealing but few will give you the original factory look. Acryl-R Seam Sealer (part number 28430W -01) is what we currently use on the production line and is sold along with the applicator on our online Store Web Site [www.airstream.com](http://www.airstream.com).

I am enclosing some information on Acryl-R Seam Sealer and how it is to be applied, if you have a trailer with a lot of seams to seal this may help make it an easier task.

**Acryl-R** is currently used to seal the exterior seams of the Airstream trailer. Acryl-R has been used by Airstream since 1986 and has taken the place of Ten-x and Cool Seal. While there are many substitutions such as silicon and Parabond, no product substitutes the exact look, and characteristics of the Acryl-R.

### **Application of Acryl-R Seam Sealer**

#### **Parts Required:**

28430W -01 Acryl-R Seam Sealer

28430W-02 Applicator Head

#### **Suggested Supplies**

Isopropyl Alcohol / mineral spirits

Soap & water

Soft Rags

Gloves

#### **Use**

For use on segment seams, Airstream built windows, beltline, rubrail, tail lights, clearance lights, exterior connections and components.



Applicator

Acryl-R Seam Sealer

### **Step One**

- Attach applicator to Acryl-R can by screwing clockwise

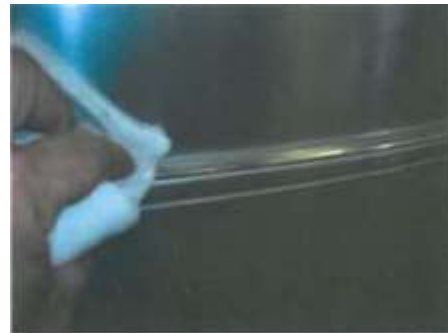


- Prime applicator head by squeezing handle- takes several attempts. As the applicator primes, the handle will slightly stiffen
- Use a disposable rag to catch the Acryl-R when priming.
- Warm Acryl-R flows better and easier than cool.
- During cool conditions the seam sealer can be warmed by placing indoors overnight prior to application



### Step Two

- Using soap and water clean the area where new Acryl-R will be applied.
- Wipe down seams denatured alcohol. Avoid any solvents that contain oil or are petroleum based.
- All loose sealer must be removed
- Always wipe with the direction of the grain of the aluminum sheet.



### Step Three

- Starting at a seam or joint, apply the seam sealer by pulling/dragging the applicator head while simultaneously gently squeezing the trigger. The greater the force on the handle the quicker you must move to avoid uneven sealer.
- Warm sealer will flow smoother and easier than cool. If sealer is cool, place in a warm place until sealer warms.

- For best performance the applicator head should be kept at approximately a 30 degree angle.

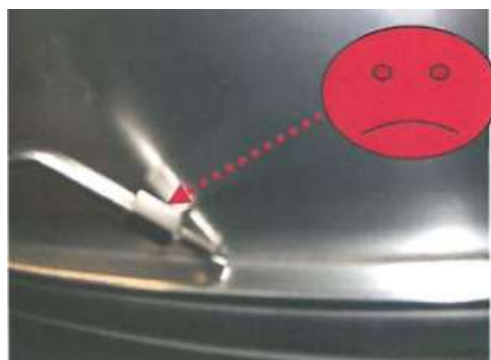


- Practice on a flat surface or inconspicuous area until this is mastered. It will take a little patience and determination.
- Use tape to protect surrounding areas from scratches until skill is mastered.



- Remember one slip of the applicator can cause permanent scratches

Hold the applicator head away from the aluminum on the trailer. If the head comes in contact with the skin while pulling/ dragging may result in an unwanted scratch in the aluminum.



## Troubleshooting

- Uneven / messy Acryl-R
- Pushing nozzle instead of pulling
- Stopping too often
- Head speed not correspondent to pressure on handle
- Acryl-R not adhering to surface.
- Dirty surface
- Wet surface
- Acryl-R applicator handle won't move
- Contents have dried out.
- Acryl-R continues to run from can when not pulling handle
- Can almost empty
- Air in can

### **Clean up**

Clean up surfaces and tools with denatured alcohol or mineral spirits. Always wipe in the direction of the grain on the aluminum.

### **Storage**

- Keep away from heat sparks and open flame.
- Protect from freezing temperatures.
- Always place pin in end of nozzle to protect from drying out.
- Keeping can in a sealed plastic bag will extend shelf life.

